

# LOIP Update Net Zero Communities

Craig McCorriston



West Lothian  
COMMUNITY PLANNING PARTNERSHIP

Prevention

Inclusiveness

Item No. 9

**IMPROVING  
HEALTH &  
WELLBEING**

**CREATING  
SKILLS &  
JOBS**

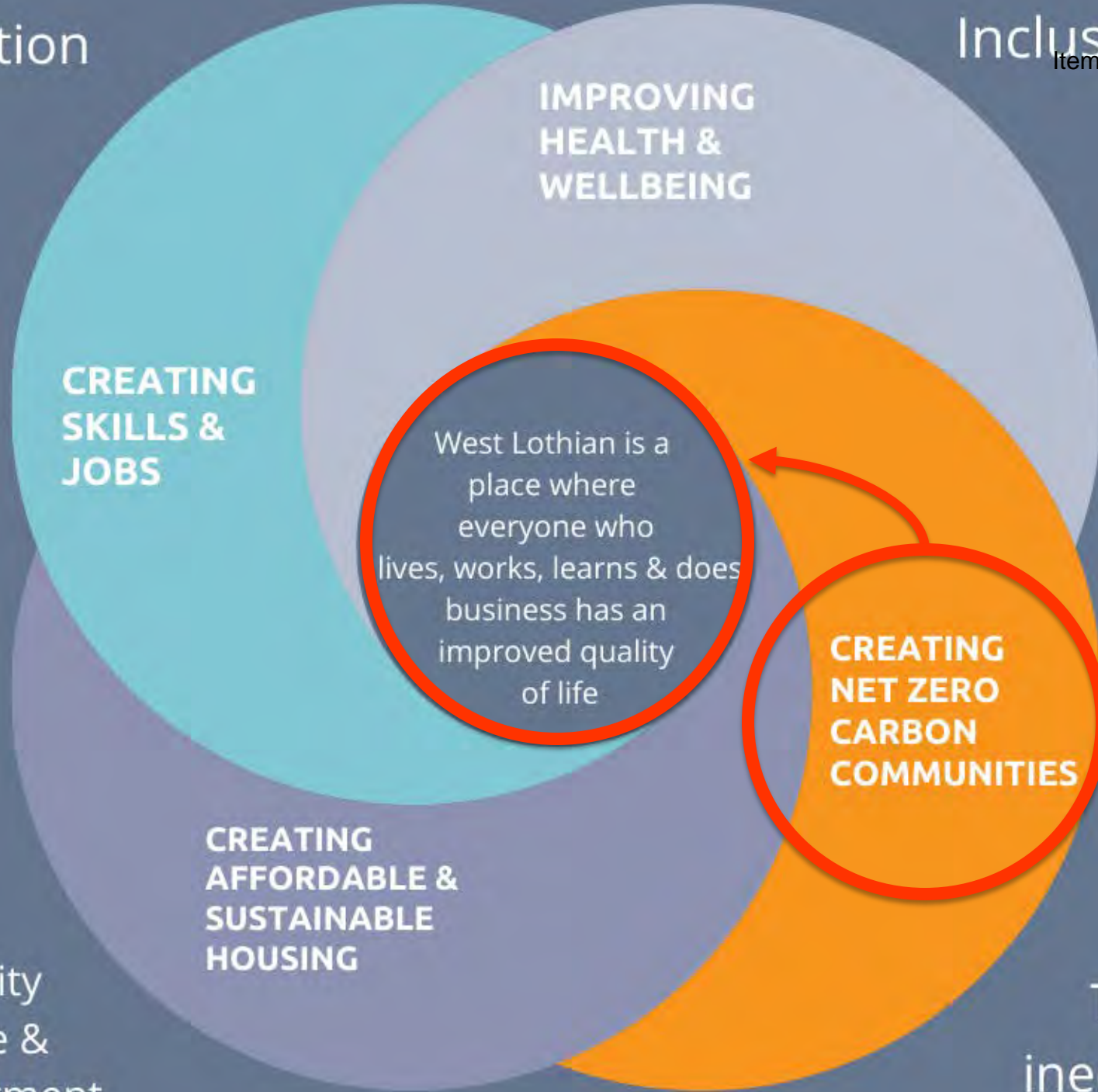
West Lothian is a  
place where  
everyone who  
lives, works, learns & does  
business has an  
improved quality  
of life

**CREATING  
AFFORDABLE &  
SUSTAINABLE  
HOUSING**

**CREATING  
NET ZERO  
CARBON  
COMMUNITIES**

Community  
Resilience &  
empowerment

Tackling  
inequalities



- CPP Climate change and Net-zero discussion session on 5<sup>th</sup> October 2022.
- Consultation internally within WLC with Energy & Climate team, Ecology & Biodiversity team and Economic Development.
- Community engagement with Blackburn Climate Action Towns



# Strategy Alignment

Item No. 9



- Climate Change Strategy
- Local Heat & Energy Efficiency Strategy
- Adaptation Action Plan
- NPF4 & Local Development Plan



## **Establishing robust CPP governance arrangements around climate change and nature restoration**

- Consider the establishment of a mechanism for governance within the CPP to monitor and measure actions relating to climate change and net-zero carbon detailed in the LOIP.

# Alignment of Activities, Plans & Strategies

- Undertake mapping activity to identify linkages and tensions across common thematic areas and identify opportunities to share resources
- Increase CPP partner joint actions around climate change and protecting/restoring nature
- Develop clear, consistent messaging in relation to climate change and biodiversity.

# Better, More Sustainable Use of Partner Assets

- Consider options to enhance co-location and further sharing of assets and facilities e.g. collating pool cars to central charging hub
- Partners contribute to the development of specific areas of work such as the Local Heat & Energy Efficiency Strategy
- Increase engagement with Business community/private sector to encourage joined up working including collaboration on reducing transport emissions/ improvements to infrastructure



# Increase CPP partner knowledge and understanding

Item No. 2

- Share the West Lothian Council Adaptation Action Plan with CPP and request information relating to their adaptation arrangements as required under the Climate Change Scotland (2009) Act, Public Bodies Climate Change Duties.



# Ensure partners are collaborating effectively

- Review emergency response plans to ensure they take account of latest climate change data and reflect current forecasts.



# Increasing Community Resilience Item No. 9

- Raise awareness of positive action around reducing emissions, nature-based solutions/carbon offsetting activities/reduced waste and circular economy and the impact this can have.
- Raise awareness of actions that can contribute to climate change and biodiversity loss, such as fire-setting, and how this can be tackled.
- Develop briefings for West Lothian communities as to what community resilience on climate change issues means and what resources communities can access, promoted through sustained engagement and increased volunteering opportunities.



LOIP PILLAR: CREATING NET ZERO CARBON COMMUNITIES						
Objective	ACTION <i>What steps will you take to achieve your short-term outcome</i>	Short Term Outcome (1-2 years)	Medium Term Outcome (5 years)	Long Term Outcome (10 years) <i>What does success look like?</i>	Responsible partner agencies	Measurement (1-2 year outcome measures) How will we demonstrate progress?
<b>Establishing robust CPP governance arrangements around climate change and nature restoration</b>	Consider the establishment of a mechanism for governance within the CPP to monitor and measure actions relating to climate change and net-zero carbon detailed in the LOIP.	<p>Mechanism in place for CPP actions around climate change and net-zero activities.</p> <p>Relevant performance indicators developed to measure progress</p> <p>Governance and reporting arrangement established.</p> <p>Annual session on Climate Change.</p>	<p>Annual sessions taking place</p> <p>Climatic/natural capital impact assessment included in CPP considerations</p>	<b><i>Everyone who lives, works &amp; delivers services in WL builds a sustainable, nature rich, net zero carbon community</i></b>	ALL	CPP members are engaging in annual session
<b>Alignment of partner activities, plans and strategies.</b>	Undertake mapping activity to identify linkages and tensions across common thematic areas (CCS) and	<p>Commonality of plans identified</p> <p>Increased understanding of how partners plans</p>	Working in partnership to deliver joint outcomes		<b>WLC, NHS Lothian, Police, Fire, SEPA, NatureScot, HES, Scottish Water</b>	Partners are sharing resources regularly

	<p>identify opportunities to share resources</p> <p>Increase CPP partner joint actions around climate change and protecting/restoring nature</p> <p>Develop clear, consistent messaging in relation to climate change and biodiversity.</p>	<p>and strategies on climate change and sustainability align and link together.</p> <p>Planned, shared messaging across the CPP (communication plan)</p>			<p><b>VSG, Community Councils</b></p>	
<p><b>Better, more sustainable use of partner assets</b></p>	<p>Consider options to enhance co-location and further sharing of assets and facilities e.g. collating pool cars to central charging hub</p> <p>Partners contribute to the development of specific areas of work such as the Local Heat &amp; Energy Efficiency Strategy</p> <p>Increase engagement with Business</p>	<p>Potential options for sharing assets identified</p> <p>Business community/Private sector engaged in governance</p>	<p>Sharing of partner resources leading to reduced environmental impact</p>		<p><b>WLC, NHS, West Lothian College, Scottish Water, Chamber of Commerce</b></p>	



	community/private sector to encourage joined up working including collaboration on reducing transport emissions/ improvements to infrastructure	mechanism within CPP.  Increased involvement and participation of businesses in active travel initiatives.				
<b>Increase CPP partner knowledge and understanding of climate change, biodiversity, adaptation and resilience.</b>	Share the West Lothian Council Adaptation Action Plan with CPP and request information relating to their adaptation arrangements as required under the Climate Change Scotland (2009) Act, Public Bodies Climate Change Duties.	'Nature literacy' CPD delivered to all partners  Increased understanding among CPP members of climatic consequences and impact on natural capital of considerations of CPP	CPP partners are able to describe how they can contribute to biodiversity gain  CPP decisions consider climate/natural capital consequences		<b>Community Council, WLC, Scottish Enterprise, Police, Fire, VSG</b>	<b>CPP partners' plans and strategies include actions that contribute to biodiversity gain</b>
<b>Ensure partners are collaborating effectively to respond to climate change related events.</b>	Review emergency response plans to ensure they take account of latest climate change data and reflect current forecasts.				<b>Police, Fire, NHS</b>	

<p><b>Increasing Community Resilience around climate change through educating communities on the effects of climate change and actions to address/prevent biodiversity loss and increase volunteering opportunities.</b></p>	<p>Raise awareness of positive action around reducing emissions, nature-based solutions/carbon offsetting activities/reduced waste and circular economy and the impact this can have.</p> <p>Raise awareness of actions that can contribute to climate change and biodiversity loss, such as fire-setting.</p>	<p>Communities understand how climate change will affect their area and are able to describe potential climate impacts in their specific context i.e. in their homes and communities.</p> <p>A programme of joint activities is developed to raise awareness within communities and across West Lothian.</p>	<p>Communities are more active and able to respond and adapt to the effect of climate change and biodiversity loss. Communities are able to describe how their behaviours can reduce or increase climate impacts. Communities are starting to change behaviours and are more active in responding to climate impacts</p>		<p><b>Community Councils, VSG, NatureScot, SRUC, WL College, Skills Development Scotland, JobCentre</b></p>	
	<p>Develop briefings for West Lothian communities as to what community resilience on climate change issues means and what resources communities can access, promoted through sustained engagement and increased volunteering opportunities.</p>	<p>Increased volunteering opportunities in carbon offsetting activity (tree planting/peatland restoration) and in the community responses to climatic events (flooding)</p>	<p>Volunteers understand how the project they're undertaking increases community resilience</p>		<p><b>Community Councils, VSG, NatureScot, SRUC, WL College, Skills Development Scotland, JobCentre</b></p>	

