

DATA LABEL: PUBLIC



EDUCATION EXECUTIVE

CONSULTATION ON REVIEW OF ADMISSION ARRANGEMENTS AT BATHGATE ACADEMY AND LINLITHGOW ACADEMY

REPORT BY HEAD OF EDUCATION (EARLY YEARS, PRIMARY AND RESOURCES)

A. PURPOSE OF REPORT

To seek Education Executive approval to commence formal public consultation on review of admission arrangements at Bathgate Academy and Linlithgow Academy.

To present to Education Executive the draft Consultation Document prepared by Council officers.

B. RECOMMENDATION

It is recommended that Education Executive:

1. Note the terms of the draft Consultation Document; and
2. Approve commencement of Statutory Public Consultation on the proposals identified in Section A of this report.

C. SUMMARY OF IMPLICATIONS

I	Council Values	Focusing on our customers' needs; being honest, open and accountable; making best use of our resources; working in partnership
II	Policy and Legal (including Strategic Environmental Assessment, Equality Issues, Health or Risk Assessment)	The Local Government etc. (Scotland) Act 1994. Education (Scotland) Act 1980 and related regulations. The Standards in Schools (Scotland) Act 2000, the School Education (Amendment) (Scotland) Act 2002 and School (Consultation) (Scotland) Act 2010. Children and Young People (Scotland) Act 2014 and UN Convention on the Rights of the Child (Article 12)
III	Implications for Scheme of Delegations to Officers	None
IV	Impact on performance and performance Indicators	None

V	Relevance to Single Outcome Agreement	<p>We are better educated and have access to increased and better-quality learning and employment opportunities.</p> <p>Our economy is diverse and dynamic, and West Lothian is an attractive place for doing business.</p>
VI	Resources - (Financial, Staffing and Property)	<p>None</p> <p>Approved financial resources will meet obligations for printing and postage, costs associated with public meetings, for advertisements for the public meetings and for dedicated staff time for the process.</p>
VII	Consideration at PDSP	<p>The report was considered at the PDSP on 28 February 2023 and the Panel were content that the report be considered by the Education Executive.</p>
VIII	Other consultations	<p>Finance and Property Services, Operational Services, Planning Economic Development and Regeneration Services, Legal Services. Formal consultation involves Parent Council, parents/carers, pupils, staff and trade unions at affected schools. Community Councils within the catchment areas of the affected schools will also be contacted.</p>

D. TERMS OF REPORT

Education Executive on 17 January 2023 approved a number of changes to Primary school catchments in the Linlithgow and Bathgate Hills area including a change to 17 properties in the Tartraven area south of Beecraigs which were transferred from the Boghall PS catchment to the Linlithgow PS catchment.

The purpose of this review is to ensure the non-denominational secondary catchments remain aligned with primary school catchments by transferring the same 17 properties at Tartraven from Bathgate Academy to Linlithgow Academy.

The Bathgate Academy catchment will then be comprised of the entire catchments of Balbardie PS, Boghall PS, Simpson PS, Blackburn PS and Murrayfield PS.

The Linlithgow Academy catchment will be comprised of the entire catchments of Linlithgow PS, Linlithgow Bridge PS, Lowport PS, Springfield PS, Torphichen PS, Westfield PS and Bridgend PS.

The area of change comprises 17 residential properties in the Bathgate Hills area south of Beecraigs. They are located within the Linlithgow & Linlithgow Bridge Community Council area, Electoral Ward 1 (Linlithgow) and St Joseph's Primary School Linlithgow for denominational primary stage schooling. As of January 2023, they are also located in the Linlithgow Primary School catchment. The proposed change to Linlithgow Academy fits better with local community ties and ensures that primary to secondary catchments are fully aligned.

There are currently no children living in this area who attend West Lothian Council education establishments.

E. CONCLUSION

Consultation on review of admission arrangements at Bathgate Academy and Linlithgow Academy.

The proposals outlined in the draft Consultation Paper would make best use of existing and future school capacities.

F. BACKGROUND REFERENCES

Appendices/Attachments:

- Draft Consultation Document
- APPENDIX 1 Existing Bathgate Academy Catchment Map
- APPENDIX 2 Existing Linlithgow Academy Catchment Map
- APPENDIX 3 Proposed Bathgate Academy Catchment Map
- APPENDIX 4 Proposed Linlithgow Academy Catchment Map

Contact:

Andrew Cotton, Senior Education Planning Officer, West Lothian Civic Centre,
Howden South Road, Livingston, West Lothian, EH54 6FF

e-mail andrew.cotton@westlothian.gov.uk

Greg Welsh

Head of Education (Primary, Early Years and Resources)

Date of meeting: 21 March 2023

WEST LoTHIAN COUNCIL

DRAFT CONSULTATION DOCUMENT

EDUCATION SERVICES PROPOSALS TO:

- **REVIEW ADMISSION ARRANGEMENTS ARISING FROM ALTERATIONS TO THE NON-DENOMINATIONAL SECONDARY SCHOOL CATCHMENT AREA AT BATHGATE ACADEMY AND LINLITHGOW ACADEMY.**

SECTION 1: Purpose of this Document

SECTION 2: The Proposal

SECTION 3: The Educational Benefit Statement

SECTION 4: Integrated Impact Assessment

SECTION 5: Consultation Process and How to Have Your Say

SECTION 1: PURPOSE OF THE DOCUMENT

The purpose of this document is to give information on:

- West Lothian Council's proposal to review of admission arrangements at Bathgate Academy and Linlithgow Academy.
- The educational benefits to be gained through the implementation of this proposal; and
- How you can give your views and take part in the consultation process.

West Lothian Council believes that thorough and effective consultation will support better outcomes for pupils and their families and will enable the vast majority of children.

Public consultations are necessary when a local authority is proposing to make a significant change to its school estate, in this case the relocation of a school. To carry out a public consultation West Lothian Council requires to follow the statutory guidance outlined in the Schools (Consultation) (Scotland) Act 2010. With this in mind, this document is further organised into the following sections:

Section 2 details the proposal and gives the background and rationale.

Section 3 contains the educational benefits statement in relation to the proposal and provides an assessment of the effects of this proposal on the children/young people and their families of the affected nursery and school.

Section 4 provides information on the Integrated Impact Assessment undertaken in reference to the proposal. An Integrated Impact Assessment (IIA) is undertaken to ensure that the Council meets its statutory requirement to assess policies and practices and ensure that they meet the legislative requirements in relation to its equality, human rights and socioeconomic obligations.

Section 5 details how West Lothian Council has organised the consultation process to meet the requirements of the legislation and how you can take part and give your views.

SECTION 2: PROPOSAL AND BACKGROUND TO THE PROPOSAL

2.1. EDUCATION SERVICES PROPOSALS TO:

- Review admission arrangements at Bathgate Academy and Linlithgow Academy.

2.2 BACKGROUND TO THE PROPOSAL

West Lothian Council Education Executive on 17 January 2023 approved a number of changes to Primary school catchments in the Linlithgow and Bathgate Hills area including a change to 17 properties in the Tartraven area south of Beecraigs which were transferred from the Boghall PS catchment to the Linlithgow PS catchment.

The purpose of this review is to ensure the non-denominational secondary catchments remain aligned with primary school catchments by transferring the same 17 properties at Tartraven from Bathgate Academy to Linlithgow Academy.

The area of change comprises 17 residential properties in the Bathgate Hills area south of Beecraigs. They are located within the Linlithgow & Linlithgow Bridge Community Council area, Electoral Ward 1 (Linlithgow) and St Joseph's Primary School Linlithgow for denominational primary stage schooling. As of January 2023, they are also located in the Linlithgow Primary School catchment. The proposed change to Linlithgow Academy fits better with local community ties and ensures that primary to secondary catchments are fully aligned.

There are currently no children living in this area who attend West Lothian Council education establishments.

2.3 ADMISSION CRITERIA

All other catchment area criteria will remain unchanged.

There will be no impact to pupils currently in attendance at West Lothian schools as a result of proposed variations to school catchment areas.

Criteria for admission will be in accordance with West Lothian Council's current admission arrangements [West Lothian Council School Admission Policy](#)

Primary to Secondary Transfer Arrangements

The Bathgate Academy catchment will be comprised of the entire catchments of Balbardie PS, Boghall PS, Simpson PS, Blackburn PS and Murrayfield PS.

The Linlithgow Academy catchment will be comprised of the entire catchments of Linlithgow PS, Linlithgow Bridge PS, Lowport PS, Springfield PS, Torphichen PS, Westfield PS and Bridgend PS.

2.5 OTHER FACTORS CONSIDERED

- **Transport**

Requests for school transport provisions will be considered in accordance with West Lothian Council's School Transport Policy [School Transport Policy](#).

SECTION 3: THE EDUCATIONAL BENEFIT STATEMENT

The Educational Benefits Statement, for the proposal, has been prepared having regard to the Guidance and Explanatory Notes published by the Scottish Government in association with the Schools (Consultation) (Scotland) Act, 2010

The specific educational benefits of the proposal are outlined below in terms of the following:

- 3.1 Curriculum
- 3.2 Secondary School Alignment

3.1 CURRICULUM

Both secondary schools will be fully equipped to deliver the full breadth of Curriculum for Excellence. Opportunities for learners to achieve across all curricular areas including developing skills, attributes and capabilities through learning aligned with the key principles of Curriculum for Excellence: challenge and enjoyment, breadth, progression, depth, personalisation and choice, coherence and relevance.

All learners will experience motivating, engaging, well-planned and differentiated learning opportunities that maximise attainment and achievement. Digital literacy will be embedded within the learning experience.

3.2 SECONDARY SCHOOL ALIGNMENT

The proposed review of admission arrangements ensures that the catchments of all West Lothian Secondary Schools remain entirely aligned with primary school catchments and ensure that all children can progress to secondary school with their primary school peers.

The Bathgate Academy catchment will be comprised of the entire catchments of Balbardie PS, Boghall PS, Simpson PS, Blackburn PS and Murrayfield PS.

The Linlithgow Academy catchment will be comprised of the entire catchments of Linlithgow PS, Linlithgow Bridge PS, Lowport PS, Springfield PS, Torphichen PS, Westfield PS and Bridgend PS.

SECTION 4: INTEGRATED IMPACT ASSESSMENT

To meet statutory equality duties, the Council conducts an Integrated Impact Assessment (IIA) to critically assess policies and practices and ensure compliance with all legislative requirements.

The aim of an IIA is to examine policies and practices in a structured way taking account of equality, human rights and socioeconomic disadvantage (poverty) implications when making decisions, ensuring the impact within the community is recognised and addressed accordingly.

IIA screening is completed using the Council's Integrated Impact Assessment Toolkit and allows the Authority to recognise positive steps it can take to promote fairness and equality of opportunity for all.

As part of the consultation process the Council will consult with a wide range of stakeholders, staff, parents/carers and young people and will welcome and address comments on the IIA process.

The outcome of the Integrated Impact Assessment will inform the Final Consultation Report and the Council's consideration of the proposed changes prior to reaching a decision on whether they should be implemented.

SECTION 5: CONSULTATION PROCESS: HAVE YOUR SAY

This section provides information on how West Lothian Council has organised the consultation process for the proposal contained within this document. It also provides information on how you can take part and give your views

In terms of the Schools (Consultation) (Scotland) Act 2010, any proposal to review admission arrangements requires a formal consultation process.

The Schools (Consultation) (Scotland) Act 2010, as amended by the Children and Young People (Scotland) Act 2014, sets out the statutory consultation requirements.

The statutory consultees for a proposal to review admission arrangements are prescribed as follows:

- the Parent Council or Combined Parent Council of any affected school
- the parents of the pupils at any affected school
- the parents of any children expected by the education authority to attend any affected school within two years of the date of publication of the proposal paper
- the pupils at any affected school (in so far as the education authority considers them to be of a suitable age and maturity)
- the staff (teaching and other) at any affected school
- any trade union which appears to the education authority to be representative of the persons mentioned in bullet point above
- the community council (if any)
- the Community Planning Partnership (within the meaning of section 4(5) of the Community Empowerment (Scotland) Act 2015 for the area of the local authority in which affected school is situated.
- any other community planning partnerships considered relevant by the Authority.
- any other education authority that the education authority considers relevant

- any other users of any affected school that the education authority considers relevant
- in relation to any relevant proposal which affects a denominational school, the Church, Denominational Body or Scottish Hierarchy of the Roman Catholic Church

Council officers will be present at the public meetings to outline the proposals, facilitate discussions and answer questions.

The Consultation meetings will give interested parties a formal opportunity to express their views.

The consultation period will incorporate a period of 30 school days (excluding any school holiday) from **Monday 24th April 2023 until Friday 9th June 2023**. This timescale adheres to the statutory consultation period for such circumstances which is a minimum of 6 consecutive weeks and include at least 30 school days.

The consultation paper will be made available electronically and in paper format.

Public Meeting

A formal public meeting will be held to discuss the proposal. Anyone wishing to attend the public meeting is invited to do so. The public meeting, which will be convened by West Lothian Council will be addressed by the Head of Education, and other senior officers of the Council, and chaired by an independent person.

The public meeting will be an opportunity to:

- Hear more about the proposal
- Ask questions about the proposal
- Have your views recorded so that they can be considered as part of the consultation process.

The public meeting will be held in **Linlithgow Academy, West Lothian, EH49 6EH on Tuesday 16th May 2023**

During the consultation period any views on this proposal should be sent in writing to the address given below:

Catherine Campbell, Senior Education Project Officer, Education Services, Civic Centre, Howden Road South, EH54 6FF

Responses can also be made by e-mail to Education.Consultation@westlothian.gov.uk

All interested parties are invited to submit their comments by close of business **Friday 9th June 2023**.

An on-line version of this document and other items related to the consultation can be found on the West Lothian Council website using this link:

<https://www.westlothian.gov.uk/article/49192/Schools-and-Education-Open-Consultations>

Consultation Timeline:

Following the end of the Consultation period West Lothian Council must provide Education Scotland with a report detailing all findings pertaining to the Consultation period.

All written and oral comments received during the Consultation process are recorded and represented in said report, along with the Council's response to those comments.

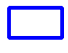

Education Scotland will consider the Council submission and advise their response accordingly.

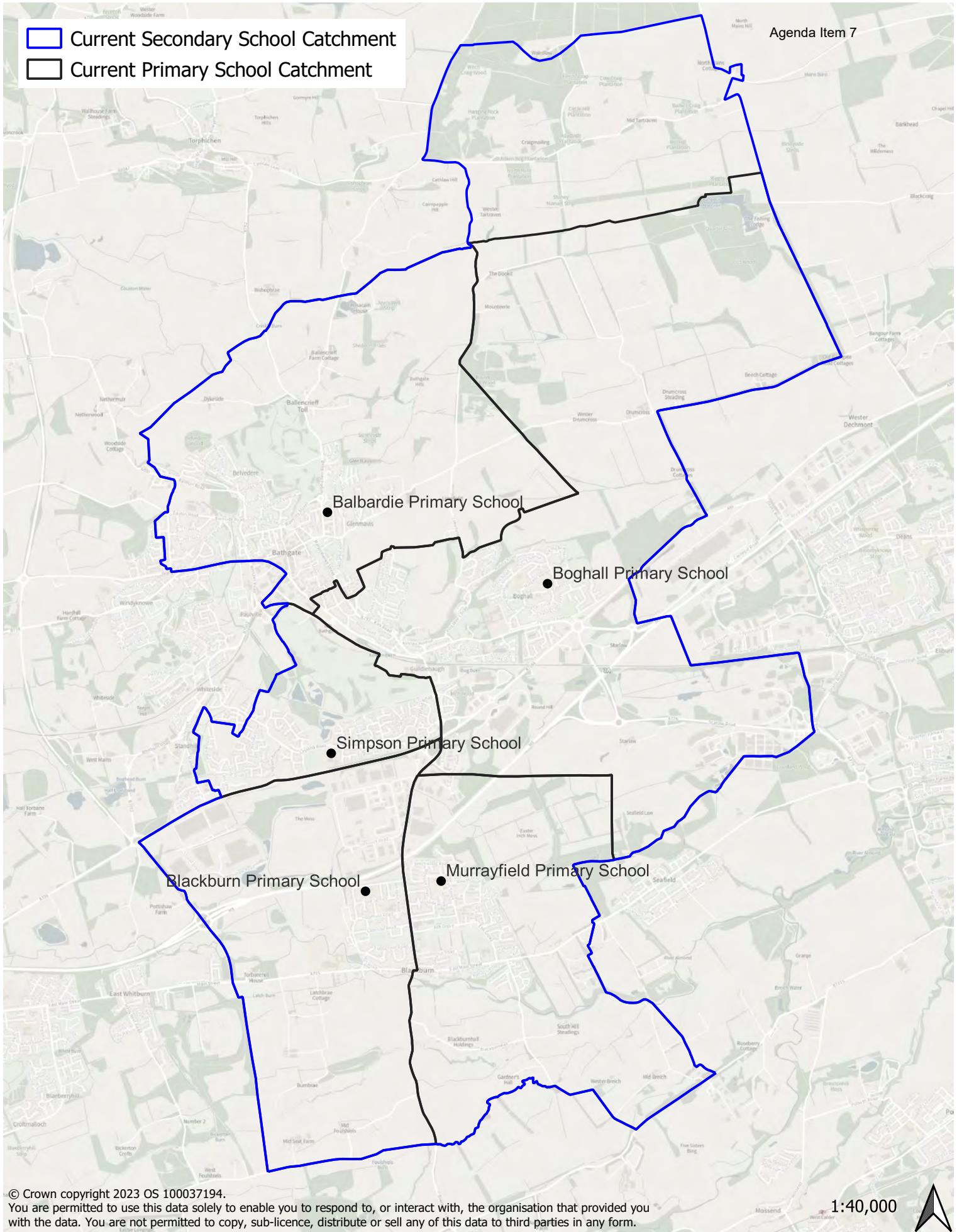
West Lothian Council will not make any decision, or put any changes into effect, until the Final Consultation Report has been concluded, published and subsequently presented to the Education Executive in the new session in **September 2023**.

The Consultation Timeline below encompasses statutory legislative requirements detailed as per Schools (Consultation) (Scotland) Act 2010.

DRAFT Statutory Consultation Timeline – review of admission arrangements at Bathgate Academy and Linlithgow Academy.

Date	Event	Description
28 February 2023	Education PDSP Meeting	To seek Panel recommendation for submission to Education Executive on proposal to commence formal public consultation
21 March 2023	Education Executive Meeting	Meeting to discuss proposal and agree continuation to statutory consultation phase
24 April 2023	Start of Consultation	Beginning of formal public consultation (min 6 continuous weeks consultation period including min of 30 school days)
16 May 2023	Public Meeting	Public Meetings to discuss proposal
09 June 2023	End of Consultation	End of Public Consultation
TBC June 2023	Submit report to Education Scotland*Dates to be agreed in advance with Education Scotland	West Lothian Council Education Services relays report on proposal and consultation findings to Education Scotland
TBC July 2023	Deadline for Education Scotland three week period for reporting back to Education Services	Education Scotland response to West Lothian Council submission
TBC August 2023	Give Education Scotland at least 5 days notice prior to publishing final report	Upon receipt of response from Education Scotland Authority will prepare and publish final consultation report
TBC August 2023	Publication of final consultation report	A minimum of three weeks after publication of consultation report Authority will make final decision
TBC September 2023	Education Executive Meeting	Decision made

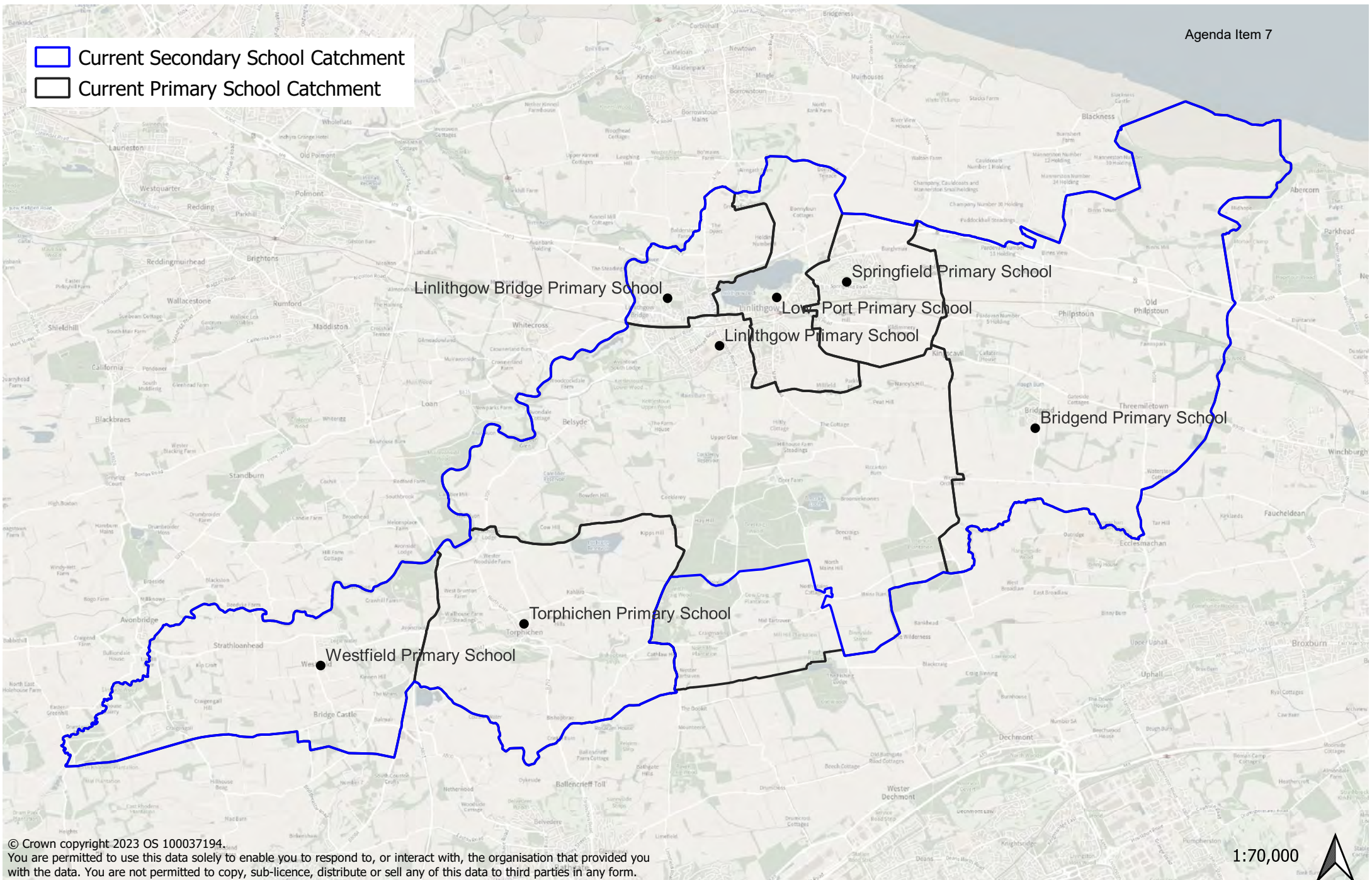
-  Current Secondary School Catchment
-  Current Primary School Catchment



© Crown copyright 2023 OS 100037194.
You are permitted to use this data solely to enable you to respond to, or interact with, the organisation that provided you with the data. You are not permitted to copy, sub-licence, distribute or sell any of this data to third parties in any form.

1:40,000



- Current Secondary School Catchment
- Current Primary School Catchment

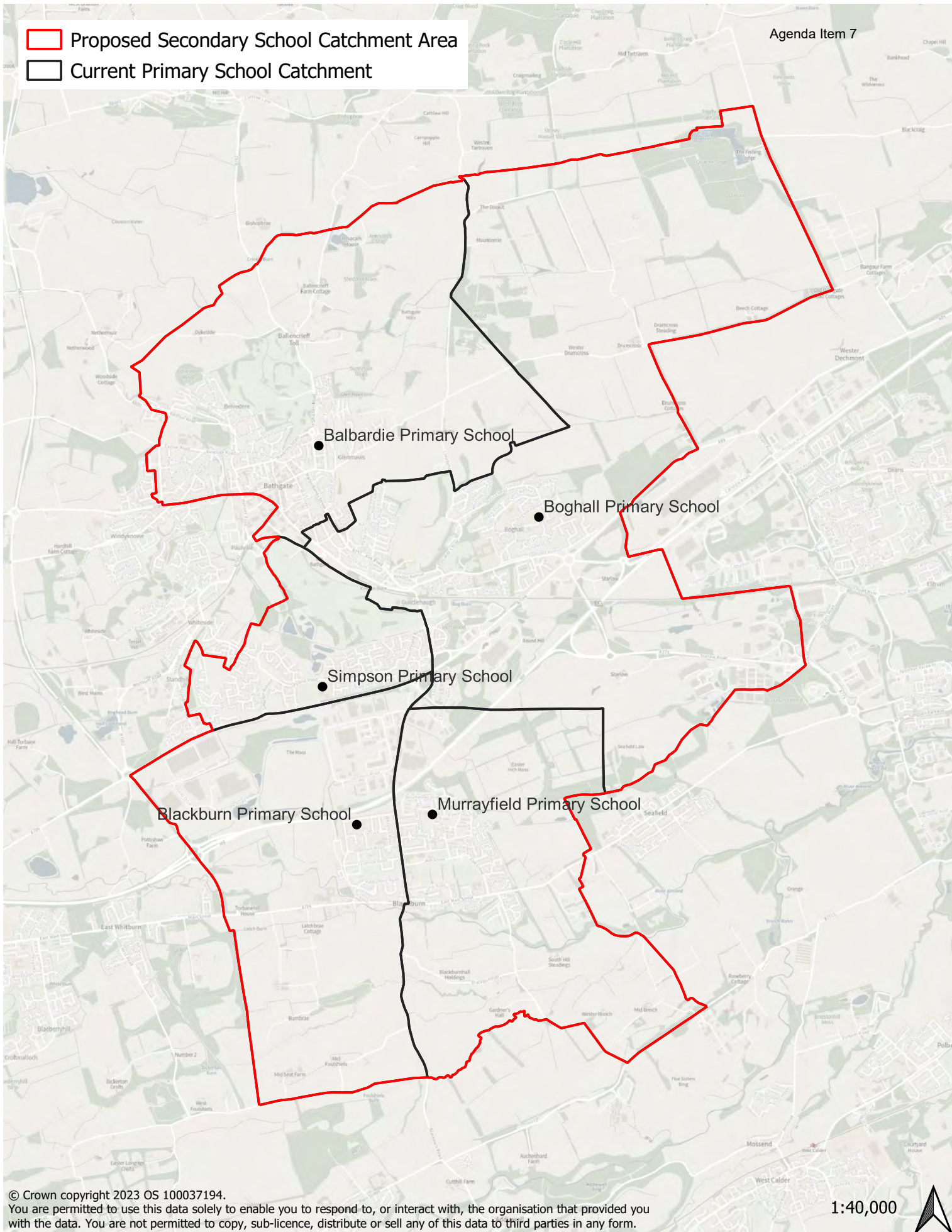


© Crown copyright 2023 OS 100037194.
You are permitted to use this data solely to enable you to respond to, or interact with, the organisation that provided you with the data. You are not permitted to copy, sub-licence, distribute or sell any of this data to third parties in any form.

1:70,000





 Proposed Secondary School Catchment Area
 Current Primary School Catchment

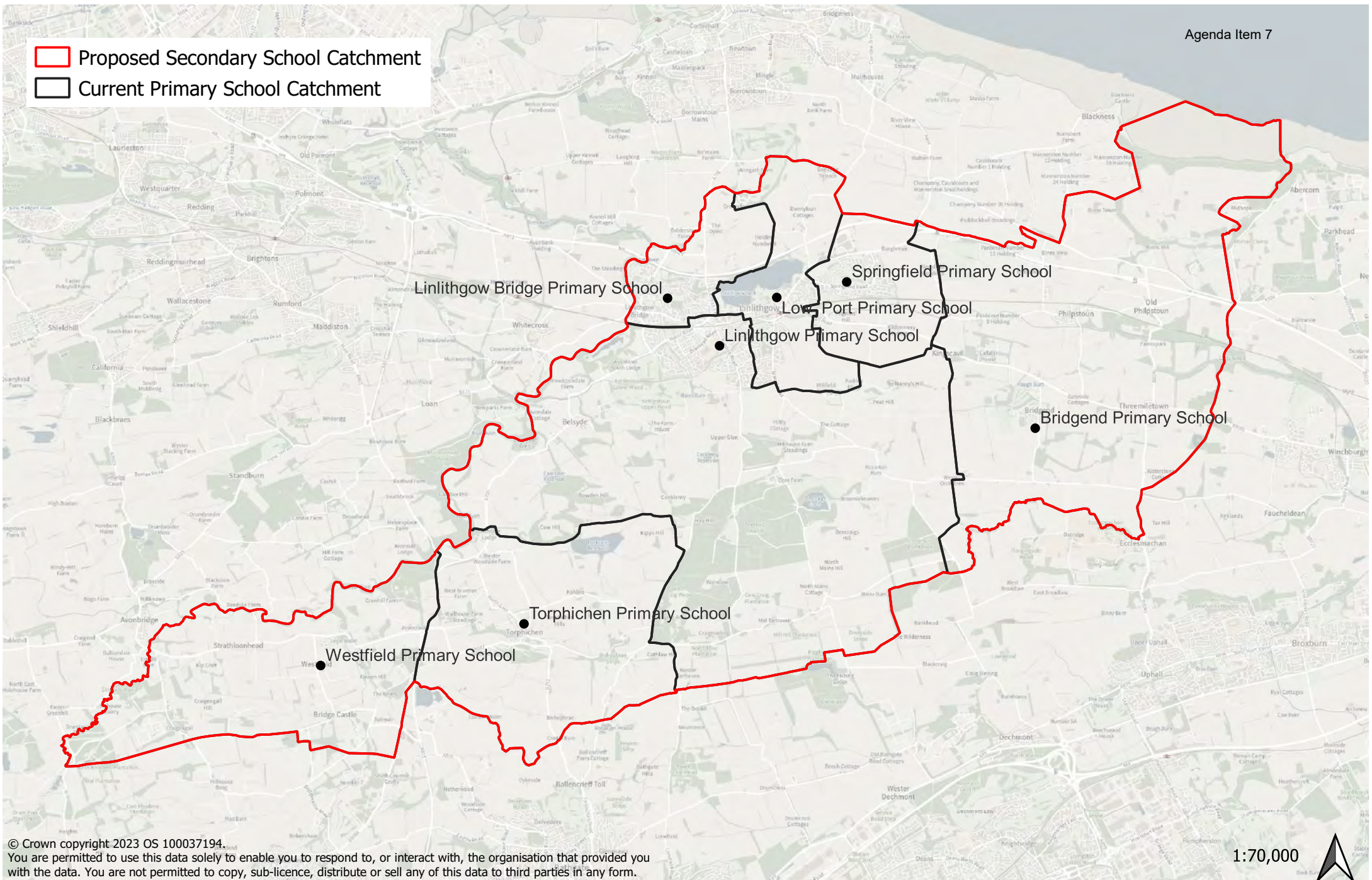


© Crown copyright 2023 OS 100037194.
You are permitted to use this data solely to enable you to respond to, or interact with, the organisation that provided you with the data. You are not permitted to copy, sub-licence, distribute or sell any of this data to third parties in any form.

1:40,000



-  Proposed Secondary School Catchment
-  Current Primary School Catchment



© Crown copyright 2023 OS 100037194.
 You are permitted to use this data solely to enable you to respond to, or interact with, the organisation that provided you with the data. You are not permitted to copy, sub-licence, distribute or sell any of this data to third parties in any form.

1:70,000

