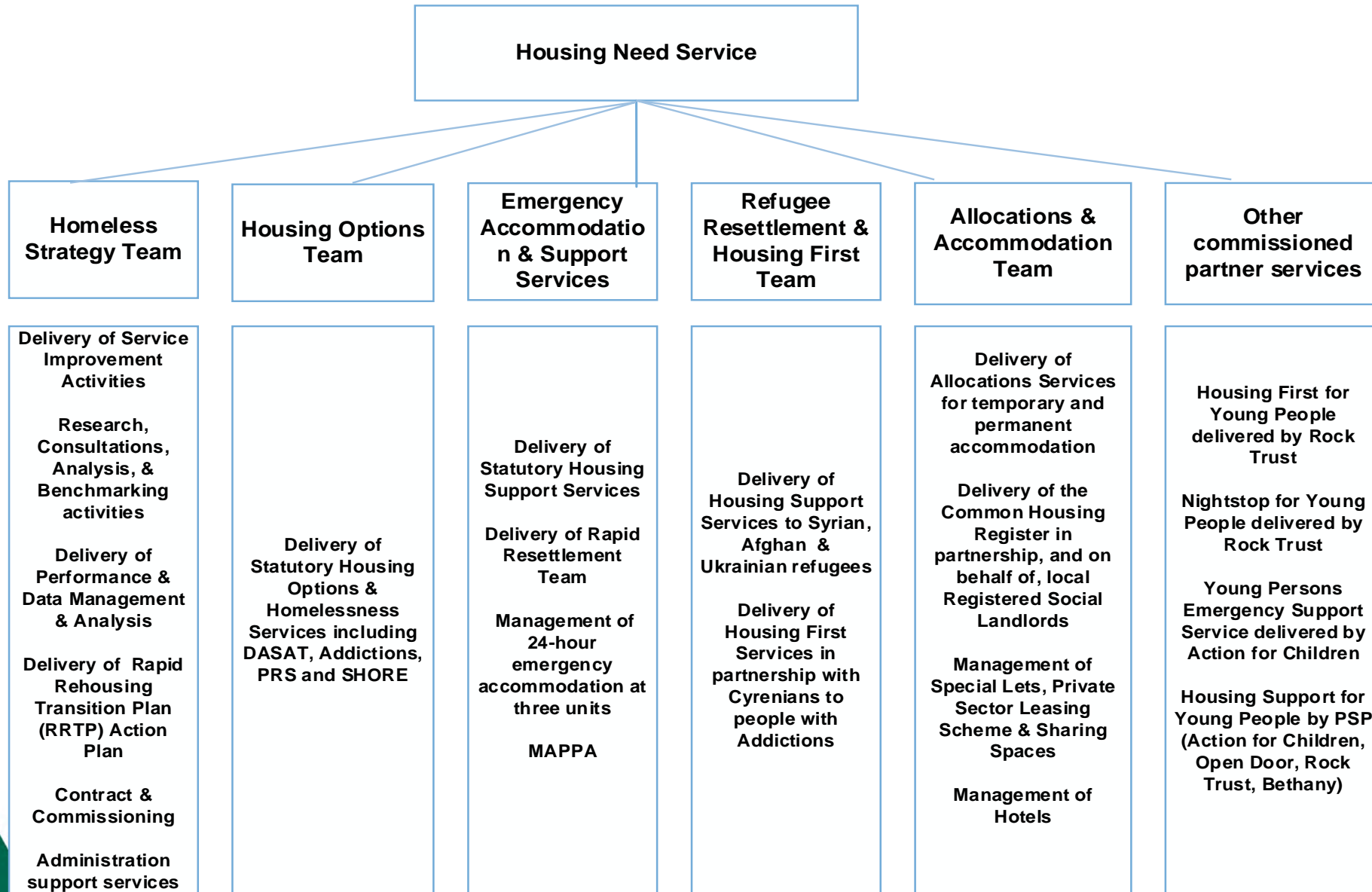




# Housing Need & Rock Trust Partnership Service Delivery

# Housing Need Functions



# Homeless Position

West Lothian Position	2020/21 31 March 2021	2021/22 31 March 2022
Homeless Presentations	1,464 (-0.4%)	1,188 (-18.9%)
Assessments as Homelessness/Threatened	1,198 (3%)	877(-26.8%)
Number of lets to homeless	402 (-58%)	384 (-4.5%)
Backlog of Open Homeless Cases	1,120 (66%)	1,396 (24.6%)
Number of people in TTs (All Types)	665 (21%)	720 (8.3%)
Length of Stay in TTs (LA Owned)	245.7 (34%)	292.7 (19.1%)
Number of People in B&B	144 (747%)	156 (8.3%)
Length of Stay in B&B	30.5 (18%)	45.3 (48.5%)
Breaches - (UAO extension implemented Oct 2020)	12 (-50%)	326 (2616.7%)

# Rapid Rehousing Transition Plan (RRTP)

## Main Actions

The RRTP sets out the vision, strategic direction and detailed action plan for the delivery of a rapid rehousing approach to homelessness. The RRTP aims to achieve this through the following actions:

- Review and implement new Housing Options Pathways to prevent homelessness
- Increasing access and supply of permanent housing
- Increase supply of suitable temporary accommodation and reduce use of B&B Accommodation
- Improve prevention of youth homeless and improve outcomes for young people
- Increase homeless prevention through improved health and wellbeing outcomes
- Increase homeless prevention through enabling housing first and rapid rehousing



# Challenges

- Limited Stock Turnover (6.1% 5 Year average)
- Supply & Demand Gap (175% of homeless applications as % of stock turnover)
- Demand for Homeless Services
  - Cost of living
  - Increasing population
  - Affordability of PRS
  - customer expectations (choice vs availability vs statutory duty)
  - Staffing implications
  - Ukrainian Refugees
- High proportion of Youth Homelessness (2<sup>nd</sup> highest in Scotland, 2018)
- Changes in Scottish Government Legislation
  - Unsuitable Accommodation Order (UAO)
  - Local Connection
  - Intentionality
  - Prevention Duty
- Impact of Covid

# Key Partners

- ❑ Our partners help deliver services to support and address homelessness
- ❑ Our partners also help plan, design and deliver improved services for our customers
- ❑ Together we work collaboratively and innovatively to make best use of resources
- ❑ Our key partners include:
  - Customers & Tenants
  - Other council services – i.e. Children & Families, Criminal Justice, Addictions, Education;
  - Registered Social Landlords in West Lothian;
  - Private Sector Landlords in West Lothian;
  - Partner agencies – i.e Advice Shop, DWP, Access2Employment, Police Scotland, NHS, Court Service;
  - Third Sector – i.e Rock Trust, Action for Children, Cyrenians, Open Door, Kharis Court;
  - Integration Joint Board.

# How We Achieve this

- ☐ RRTP Board
- ☐ RRTP Prevention & Supply Working Group
- ☐ RRTP Youth Homelessness Working Group
- ☐ RRTP Health & Wellbeing Working Group
- ☐ Public Social Partnerships
- ☐ Common Housing Register
- ☐ Joint Strategy Group

# Rock Trust – Approach to Joint Delivery

- ❑ A shared vision
- ❑ Utilising skills and experience from all parties
- ❑ Trusting, honest and transparent
- ❑ Accept mistakes and learn from them
- ❑ Needs led – what's best for people not for the organisation
- ❑ Real life examples:
  - Nightstop
  - Housing First for Youth
  - Public Social Partnership
  - Future projects – Upstream / Live and Work





Thanks – any questions?