

Development Management Committee

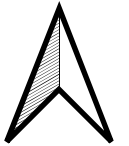
17 August 2022

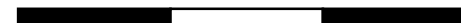
Item 05 - Application : 0898/FUL/21

Erection of a 60 bed care home with associated access, parking and landscaping works

Falkirk Road / Linlithgow / EH49 7PJ







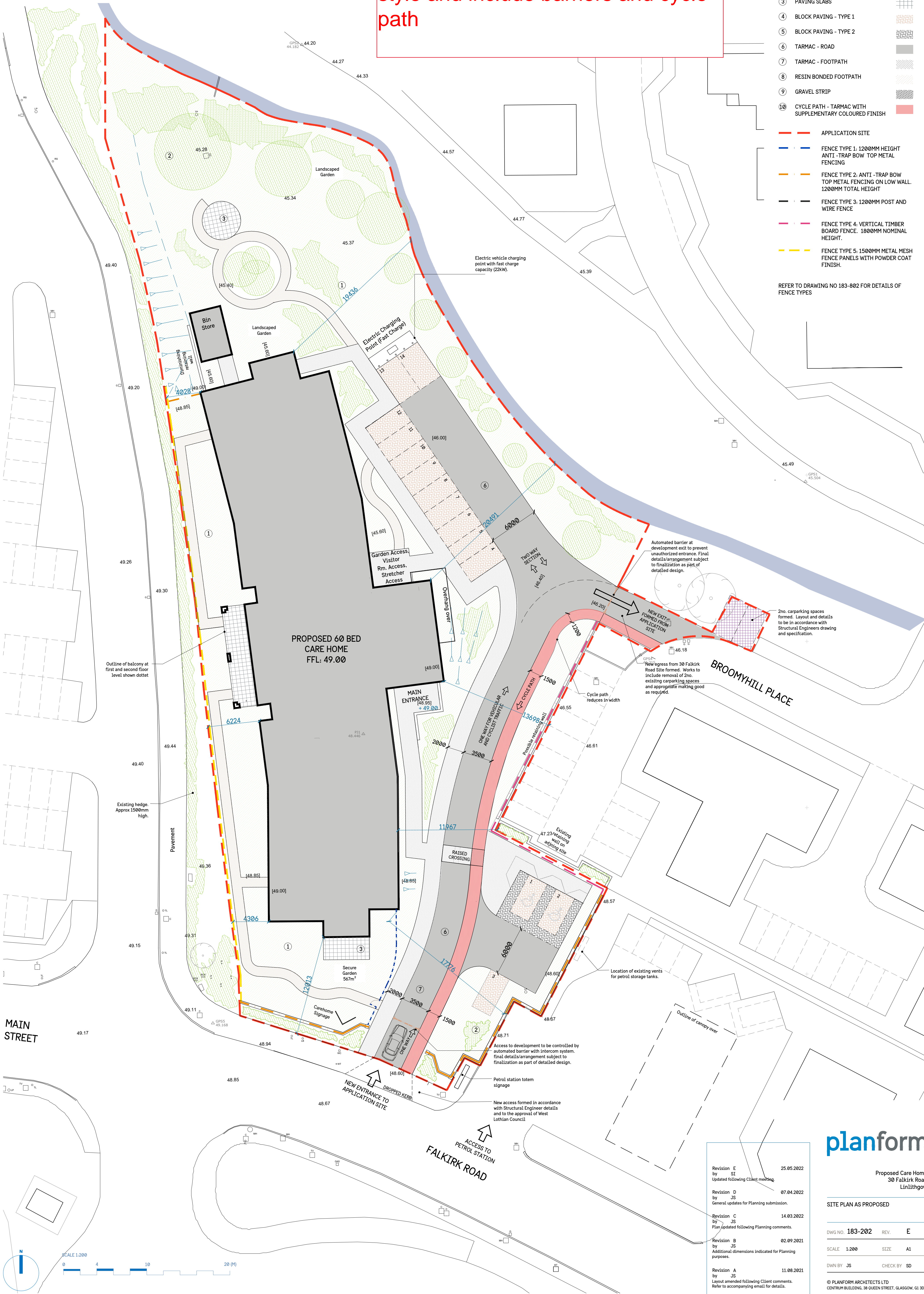
Layout as amended to alter junction style and include barriers and cycle path

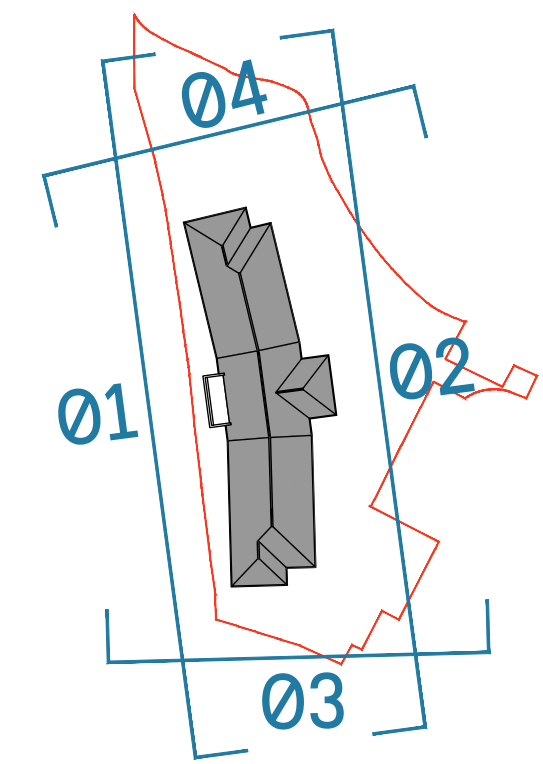
DRAWING LEGEND

- 1 GRASS / GREENERY
- 2 TREE/SHRUBS/HEDGE
- 3 PAVING SLABS
- 4 BLOCK PAVING - TYPE 1
- 5 BLOCK PAVING - TYPE 2
- 6 TARMAC - ROAD
- 7 TARMAC - FOOTPATH
- 8 RESIN BONDED FOOTPATH
- 9 GRAVEL STRIP
- 10 CYCLE PATH - TARMAC WITH SUPPLEMENTARY COLOURED FINISH

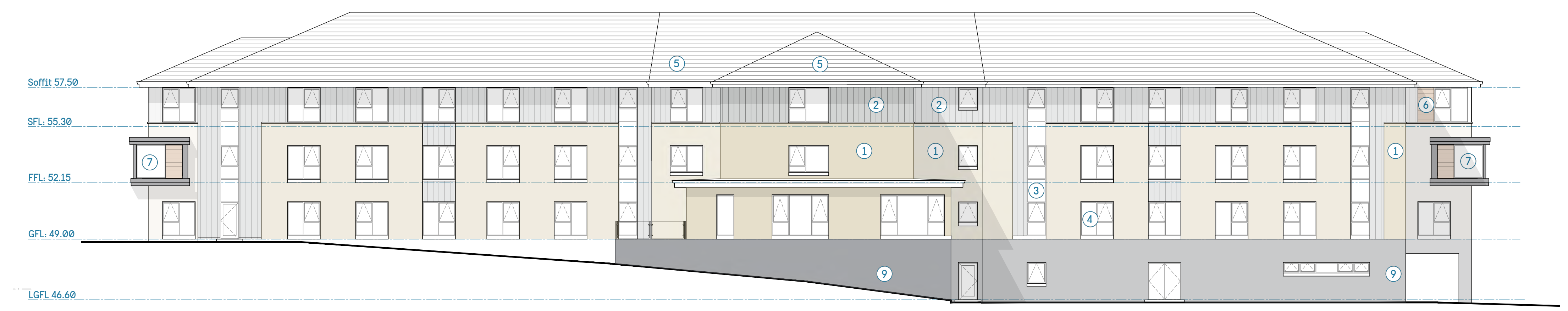
- APPLICATION SITE
- FENCE TYPE 1: 1200MM HEIGHT ANTI -TRAP BOW TOP METAL FENCING
- FENCE TYPE 2: ANTI -TRAP BOW TOP METAL FENCING ON LOW WALL. 1200MM TOTAL HEIGHT
- FENCE TYPE 3: 1200MM POST AND WIRE FENCE
- FENCE TYPE 4: VERTICAL TIMBER BOARD FENCE. 1800MM NOMINAL HEIGHT.
- FENCE TYPE 5: 1500MM METAL MESH FENCE PANELS WITH POWDER COAT FINISH.

REFER TO DRAWING NO 183-802 FOR DETAILS OF FENCE TYPES

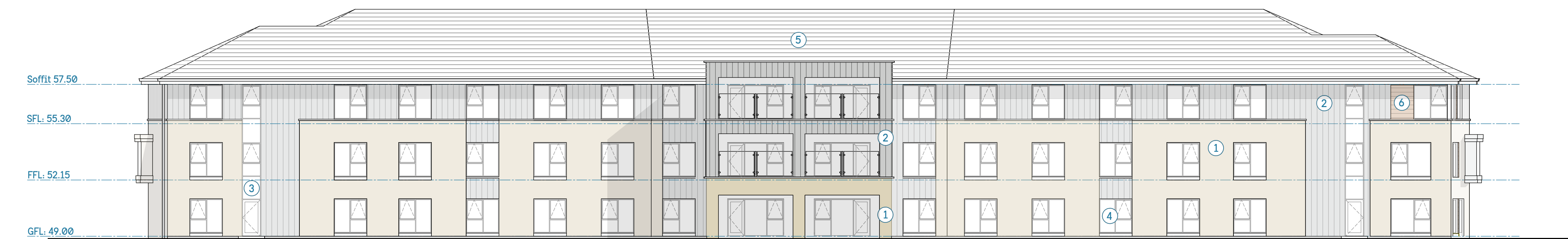




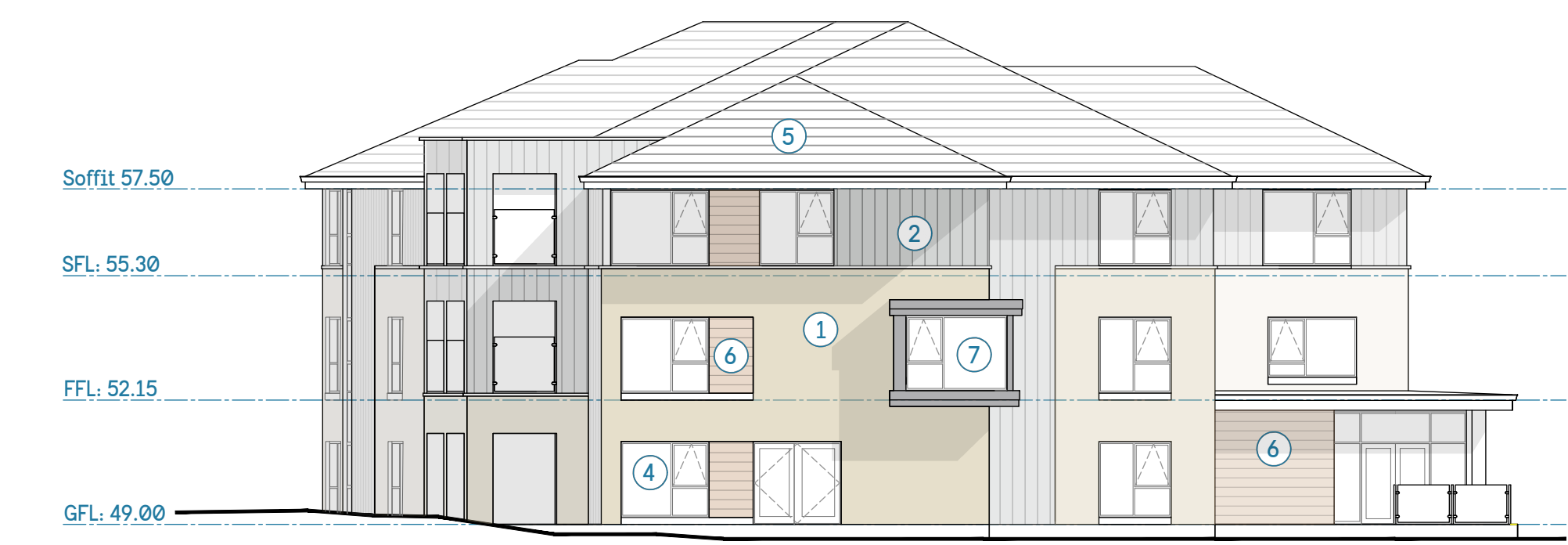
Elevation Key Plan



Ø1: West Elevation as Proposed



Ø2: East Elevation as Proposed



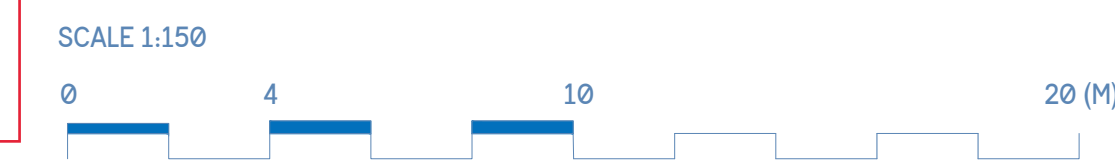
Ø3: South Elevation as Proposed



Ø4: North Elevation as Proposed

- Material Legend
- 1 Buff facing brick
 - 2 Vertical cladding
 - 3 Curtain walling
 - 4 Windows with dark grey frame
 - 5 Concrete interlocking roof tiles
 - 6 Coloured metal panel
 - 7 Projecting feature window bay
 - 8 Full height window with dark grey frame
 - 9 Dark facing brick

Elevations
as originally
submitted



PLANNING ISSUE

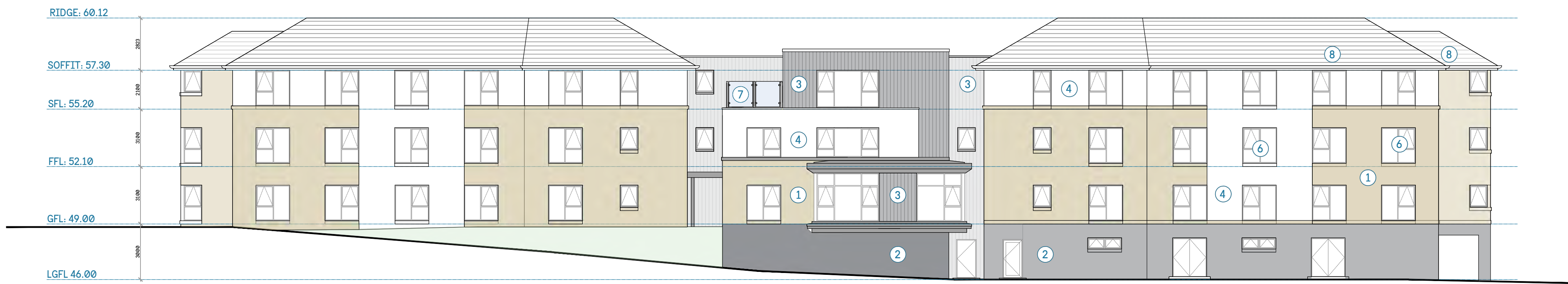
planform

PROPOSED CARE HOME
30 FALKIRK ROAD
LINLITHGOW

Sectional Elevations as Existing

| | | | |
|---------|---------|----------|----|
| DWG NO. | 183-503 | REV. | - |
| SCALE | 1:150 | SIZE | A1 |
| DWN BY | JS | CHECK BY | SD |

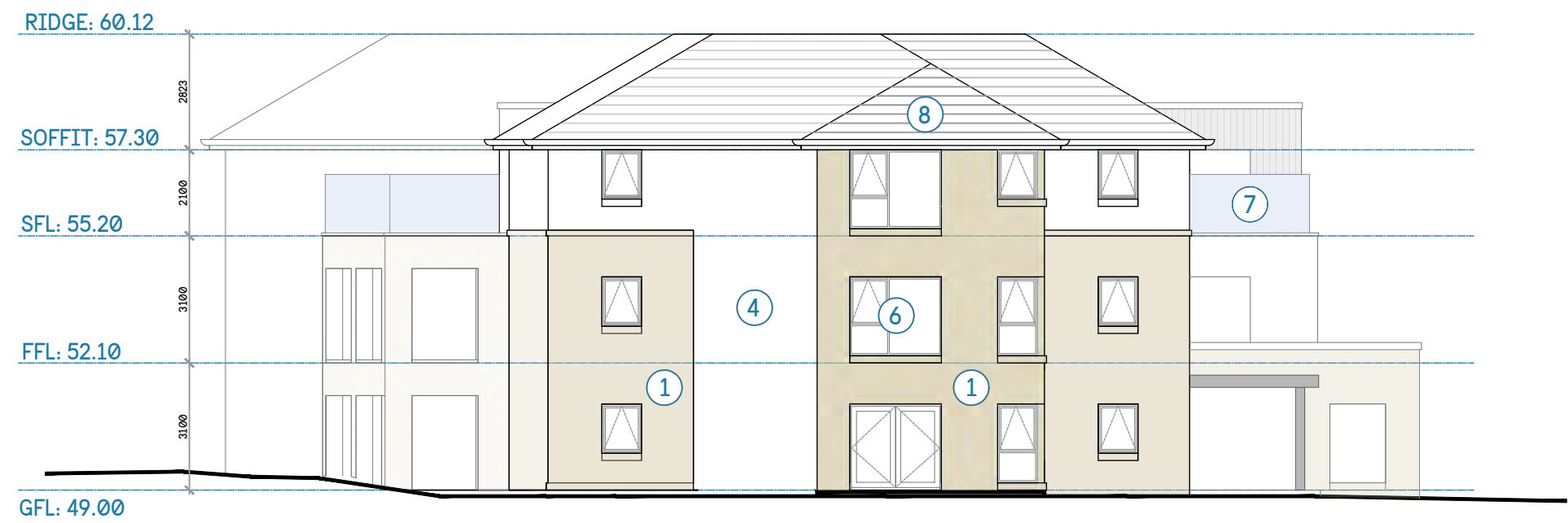
© PLANFORM ARCHITECTS LTD
CENTRUM BUILDING, 36 QUEEN STREET, GLASGOW, G1 3QX
Planform Architects accepts responsibility for this document only to the commissioning party and not to any other. Planform Architects do not accept liability for the accuracy or veracity of the survey information provided by others and used in the preparation of this drawing.



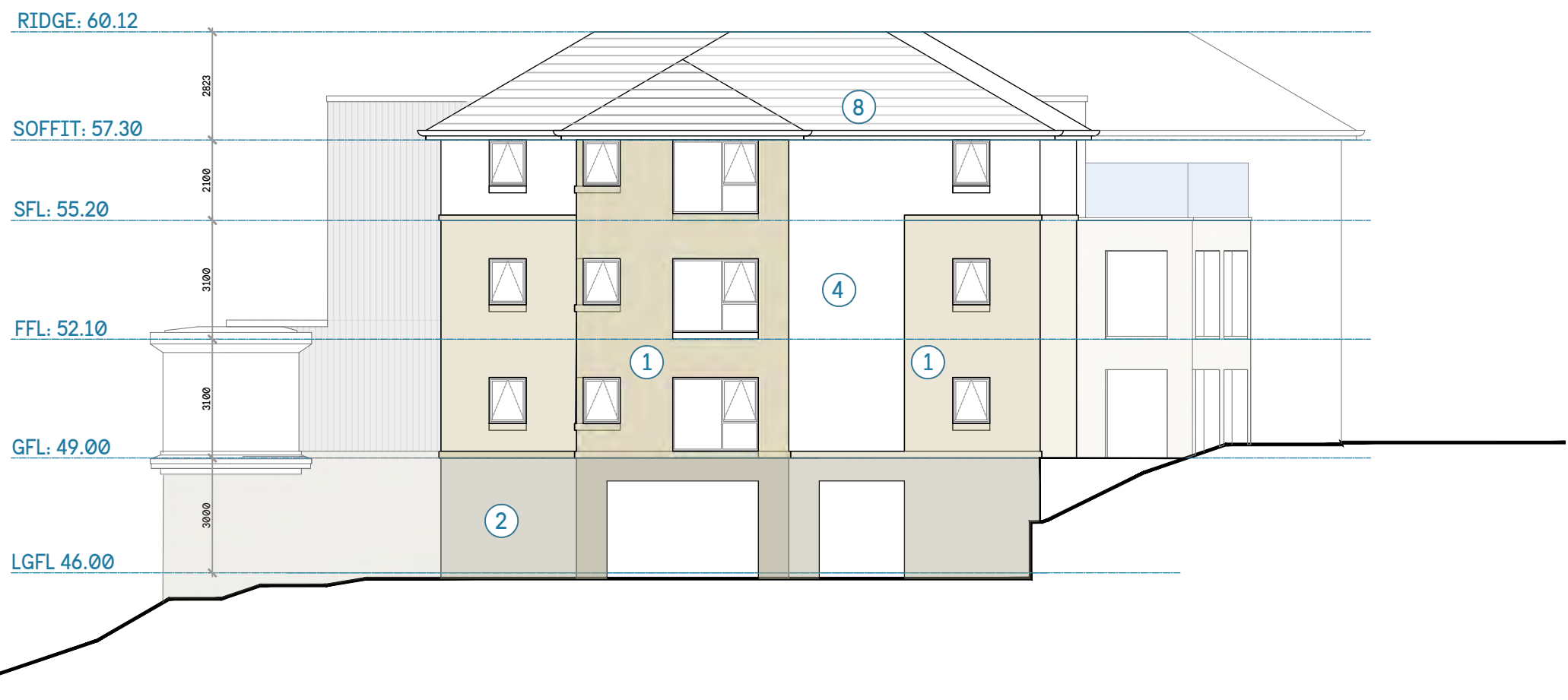
01: East Elevation as Proposed



02: West Elevation as Proposed



03: South Elevation as Proposed

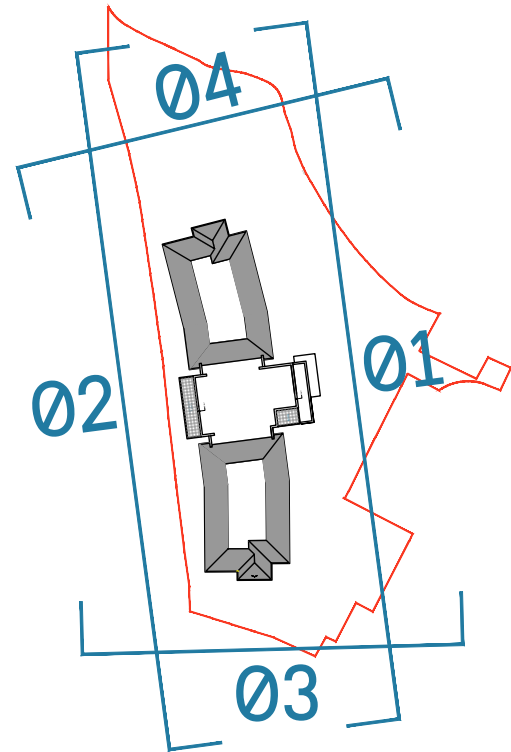


04: North Elevation as Proposed

Elevations
as amended

Material Legend

- 1 Cast Stone (Type A)
- 2 Cast Stone (Type B)
- 3 Metal cladding
- 4 Light coloured render
- 5 Curtain walling
- 6 Windows dark gray frame
- 7 Glass balustrade
- 8 Concrete interlocking rooftiles



Elevation Key Plan

| | |
|--|------------|
| Revision C | 08.04.2022 |
| by JS | |
| Annotation amended. | |
| Revision B | 07.04.2022 |
| by JS | |
| Elevations updated following Planning comments. | |
| Revision A | 02.09.2021 |
| by JS | |
| Additional dimensions indicated for Planning purposes. | |

planform

PROPOSED CARE HOME
30 FALKIRK ROAD
LINLITHGOW

Elevations as Proposed

DWG NO. 183-503 REV. C

SCALE 1:150 SIZE A1

DWN BY JS CHECK BY SD

© PLANFORM ARCHITECTS LTD
CENTRUM BUILDING, 36 QUEEN STREET, GLASGOW, G1 3QX
Planform Architects accepts responsibility for this document only to the commissioning party and not to any other. Planform Architects do not accept liability for the accuracy or veracity of the survey information provided by others and used in the preparation of this drawing.

SCALE 1:150





View from Falkirk Road.
New access to be formed
in approximate location of
silver car.



View looking south
from within site to
Falkirk Road.



View within site.
White render and
metal profile
storage sheds.



View towards exit from site through existing parking bays. 2 new bays to be formed on right.



View looking south
across Mains Burn
from Broomyhill Place