

Development Management Committee

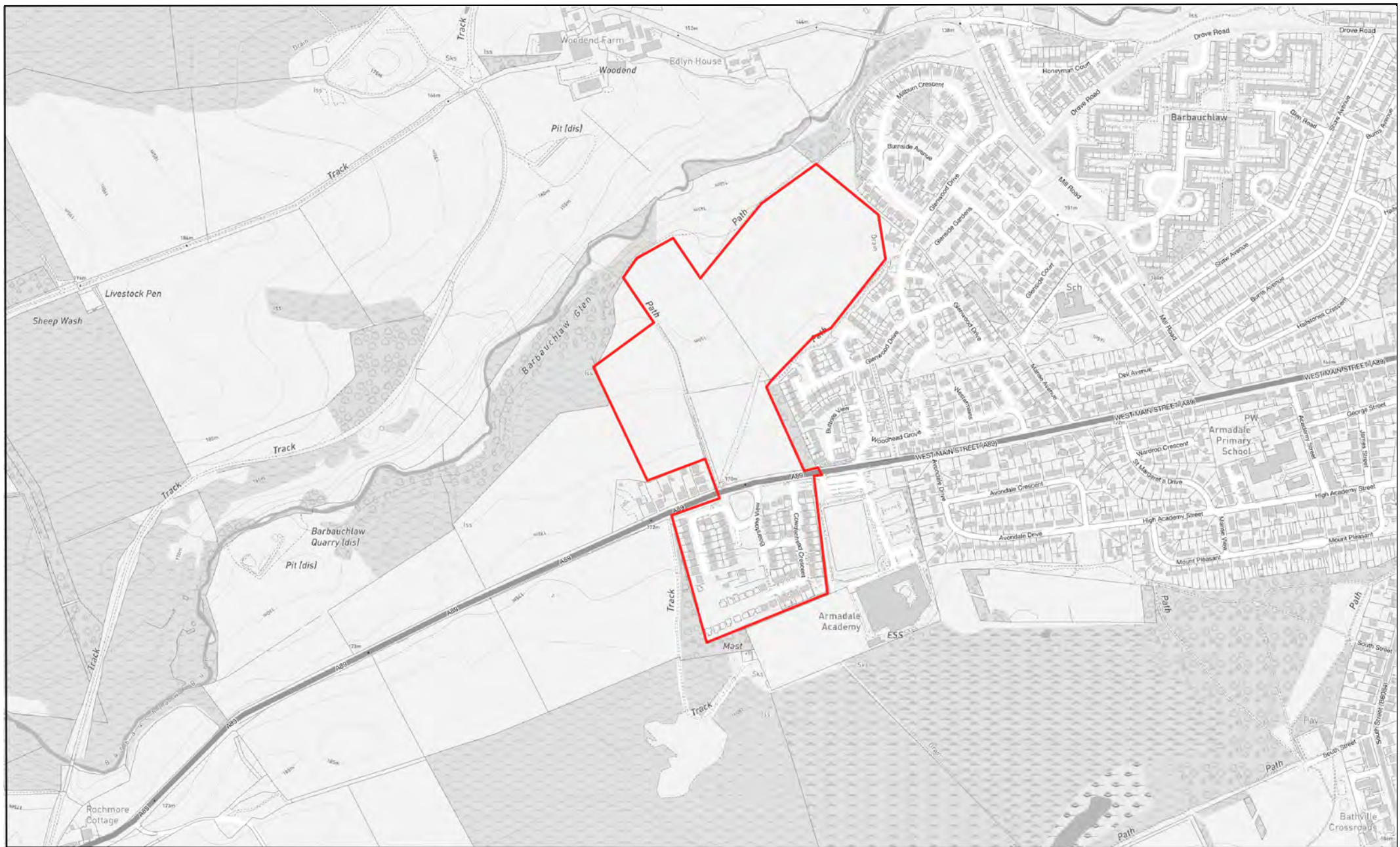
17 November 2021

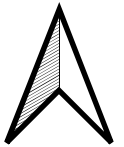
Item 5 - Application : 0497/P/21

Application under Section 42 to develop land to modify condition 4 of planning permission in principle 0020/P/16 for a 19 hectare development with associated works to allow a maximum of 375 residential units to be constructed on the north side of A89

Standhill North / South West Main Street / Armadale







View from West Main Street looking north into site



View looking south to Standhill South



View looking north towards consented soil storage on site



View south west across site



View west out of the site



Looking south east towards Glenwood Drive



Looking north west out of the site



