

Appendix 3 : School Leaver Destination Results Analysis - 2011/12

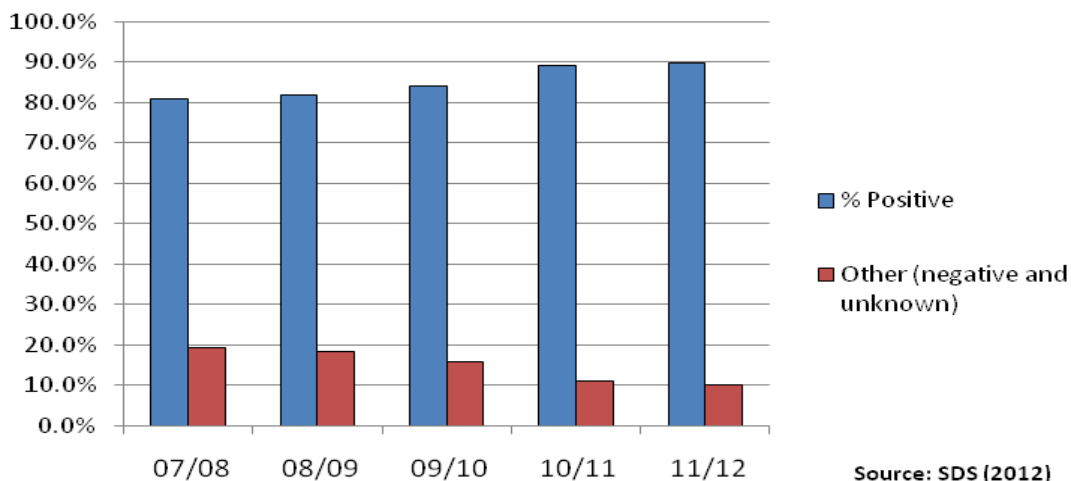
Key points

- In 2011/12, 89.8% of West Lothian's school leavers progressed into positive destinations
- West Lothian's positive destination level increased by 0.8% on the 2010/11 level.
- West Lothian is on a par with the Scottish average of positive destinations for school leavers.
- Negative destinations in West Lothian are now at the lowest level they have been since 2000/01.
- Analysis of individual schools appears to show a distinct north-east to south-west split, with schools in the south-west of West Lothian achieving lower than average positive destinations.
- Out of 32 local authorities, West Lothian is in joint 18th position with South Lanarkshire and is joint 2nd place in relation to comparator authorities.

West Lothian's SLDR

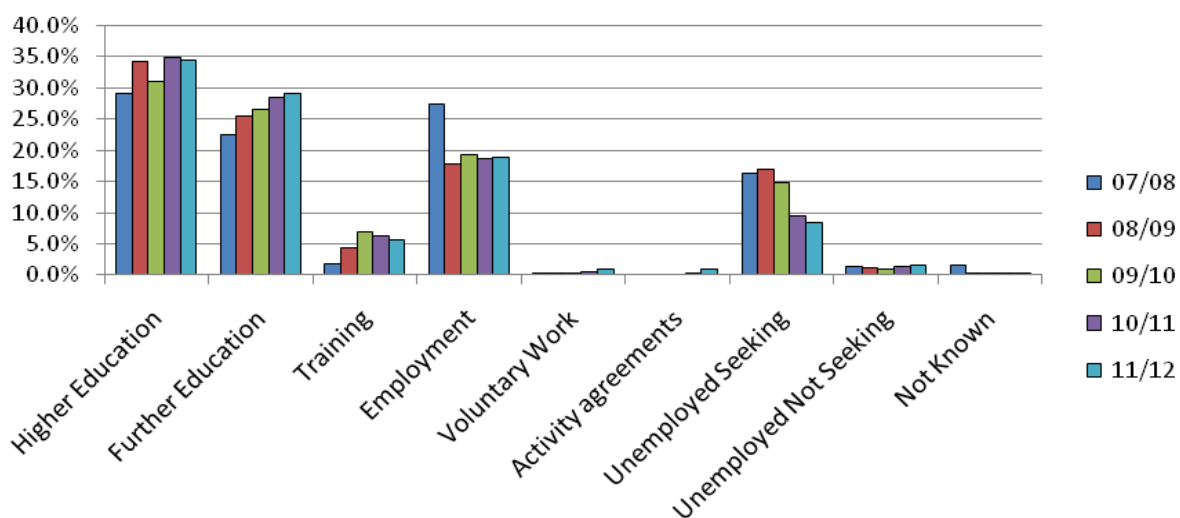
The School Leaver Destination Results are published annually by Skills Development Scotland, with results of a follow up survey published around six months later. The 2011-12 survey was carried out in the period 5th September to 5th October 2012 and the results released in January 2013.

Figure 1: Positive and other destinations



- Over the last five years, West Lothian has seen a continuous improvement in the numbers of school leavers achieving a positive destination (see Figure 1).
- Since 2007/08, the proportion of school leavers entering a positive destination (higher education, further education, training, volunteering or employment) has increased by 9.0%.
- West Lothian's negative destinations are now at the lowest they have been since 2000/01.
- The number of young people leaving school fell significantly between 2010/11 and 2011/12. This was probably due to a proportionate increase in staying on rates..

Figure 2: Destinations West Lothian



Source: SDS (2012)

Within the overall positive destination figures for West Lothian (Figure 2) there has been some movement in the categories of destinations into which school leavers are entering.

Higher Education

- over the past five years there has been an overall increase in the number of young people entering higher education from West Lothian schools.
- In 2010/11, the percentage of school leavers entering higher education reached its highest level ever of 34.9%.
- This percentage figure dropped very slightly to 34.4% in 2011/12.

Further Education and Training

Partners in West Lothian have worked hard to increase the numbers of young people entering further education and training, increasing both the choice and number of places available. This appears to have had some success:

- a year on year increase in the numbers of young people entering further education since 2007/08.
- in 2011/12, the proportion of school leavers entering FE reached its highest percentage level of 29.1% .
- the numbers entering training had increased year on year until 2009/10 when 6.8% of leavers entered training. There has however been a very slight fall since to 6.3%.

Employment

Whilst employment used to be one of the most popular destinations for young people leaving school in West Lothian, the reduction in employment opportunities and the increased number of people looking for work caused by the current economic climate, has meant that a lower proportion of young people entered employment in 2011/12 than in 2007/08. Employment reached a low in 2008/09 when only 17.8% of young people entered employment directly from school. The employment destination increased to 19.4% the following year and has remained relatively stable since, with 18.8% of leavers entering employment in 2011/12. This demonstrates a continuing challenge of accessing employment directly from school.

Voluntary work and Activity Agreements

Volunteering activity has not been a significant destination for young people, as is the case for the majority of Scotland's local authority areas, and reached its highest ever level at 0.9% in 2011/12, an increase of 0.4% on 2010/11. This does not suggest that young people in West Lothian do not volunteer, simply that most work, study or train. The figures highlight a possible opportunity for continuous improvement.

Activity Agreements, introduced as a positive destination for the first time in 2010/11, are signed 'contracts' between a Trusted Professional i.e. a key worker or youth worker and a young person who has not engaged in transitional activities. The aim of the Activity Agreement is to set goals such as entering college, training or employment and to agree appropriate steps to achieve this goal. Activities can be bespoke training, motivational or confidence building interventions or other barrier removal activities. In West Lothian, the Working with Young People Team will be delivering interventions for young people on Activity Agreements within localities. Whilst the level of Activity Agreements, has increased from 0.1% to 0.9%, it still represents a very small but important number of young people (17 in total).

Negative destinations – Unemployment

The unemployed and seeking employment figure has fallen year on year since 2008/09 to 8.5% in 2011/12. In total, 158 young people were recorded as unemployed and seeking work in October 2012.

Unemployed and not seeking figures (most commonly due to illness, pregnancy or caring for relatives) had fallen consistently over the three years to October 2010 when only 0.9% of school leavers were unemployed and not seeking. Since then it has increased slightly each year to reach 1.5% in October 2012, which is still a relatively low level and represents 27 young people.

School by school analysis

Underpinning West Lothian's gradually improving positive destinations has been a great deal of work by individual schools, the wider education services and partner agencies.

Table 1 below shows the change in positive destinations from 2007/08 to 2011/12 for each of West Lothian's secondary schools. Key points are:

- All of West Lothian's 11 secondary schools have seen an increase in the proportion of leavers going into a positive destination;
- Inveralmond Community HS has seen a consistent year on year improvement in its positive leaver destinations figures;
- Broxburn Academy, Inveralmond Community HS and Deans Community HS have achieved the largest increases in their positive destinations and all from low starting levels;
- St Kentigern's Academy (+7.7%) and Inveralmond Community HS (+7.1%) achieved the largest increases in their positive destinations between 2010/11 and 2011/12.

On a less positive front, Armadale Academy (78.3%) and Whitburn Academy (82.9%) had the lowest levels of positive destinations, in 2011/12. The performance of Armadale Academy was also notable in that the school's positive destination results improved in

2010/11 but deteriorated significantly in 2011/12. West Calder High School's performance in 2011/12 was 6.6% down on its 2010/11 figure (a relatively high 92.7%). This was the largest fall across the West Lothian secondary schools but it followed however a three year period of sustained improvement in the school's performance.

There appears to be a distinct north/east to south/west pattern in the leaver destination results for non-denominational schools. Schools to the south and west of the local authority area recording lower positive outcomes, below both the West Lothian and Scottish averages. Schools in Livingston, Linlithgow and Broxburn Academies all achieved positive destination results above the WL and Scottish average.

The availability of more local training and FE opportunities in Livingston may be one of the key factors in the apparent east-west differences in positive destinations.

School	Percentage positive destinations by school					Change in +ve destination rate	
	2007-08	2008-09	2009-10	2010-11	2011-12	2010/11 to 2011/12	2007/08 to 2011/12
Armadale Academy	77.8	78.7	74.5	84.2	78.3	-5.9	0.5
Bathgate Academy	76.5	82.8	77.4	87.8	88.9	1.1	12.4
Broxburn Academy	75.8	84.2	82	89	93.9	4.9	18.1
Deans C HS	76	78.1	80.6	93.5	92.8	-0.7	16.8
Inveralmond CHS	75.2	79.9	83.9	85.4	92.5	7.1	17.3
Linlithgow Academy	89.6	90.8	91.4	93.4	92	-1.4	2.4
St Kentigern's Academy	84.3	85.9	84.7	84.2	91.9	7.7	7.6
St Margaret's Academy	87.5	86.7	89.4	92.8	93.1	0.3	5.6
The James Young HS	84.2	76.2	90.5	91.2	91.5	0.3	7.3
West Calder HS	83.6	77.4	86.6	92.7	86.1	-6.6	2.5
Whitburn Academy	73.5	77.9	84.6	84.5	82.9	-1.6	9.4
West Lothian	80.8	81.9	84.1	89	89.8	0.8	9
Scotland	86.4	85.7	86.8	88.9	89.9	1	3.5

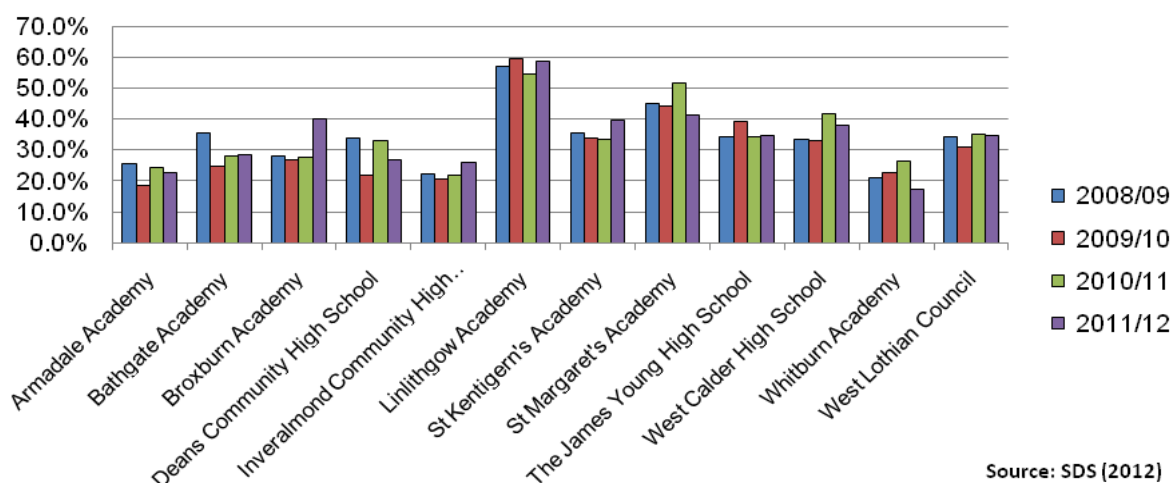
The following charts show each of the positive destinations broken down into the proportions of leavers from each school entering that destination.

Destination analysis by school - Higher Education

- over the last four years, Linlithgow Academy has consistently achieved the highest level of young people entering higher education after leaving school.
- There was an increase in 6 out of the 11 West Lothian secondary schools.
- Broxburn Academy has performed notably well with the largest increase (12.4%) of any school in the last two years.

Table 2: Higher education by school				
	2008/09	2009/10	2010/11	2011/12
Armadale Academy	25.7%	18.5%	24.2%	22.6%
Bathgate Academy	35.7%	24.9%	27.9%	28.3%
Broxburn Academy	28.1%	26.7%	27.7%	40.1%
Deans C HS	33.8%	21.9%	32.9%	26.8%
Inveralmond CHS	22.2%	20.7%	21.7%	26.0%
Linlithgow Academy	57.1%	59.5%	54.6%	58.8%
St Kentigern's Academy	35.3%	33.7%	33.5%	39.6%
St Margaret's Academy	45.1%	44.1%	51.5%	41.4%
The James Young HS	34.3%	39.3%	34.3%	34.5%
West Calder HS	33.3%	32.9%	41.9%	38.0%
Whitburn Academy	20.9%	22.6%	26.5%	17.1%
West Lothian Council	34.2%	31.1%	34.9%	34.5%

Figure 3: Higher education by school



Source: SDS (2012)

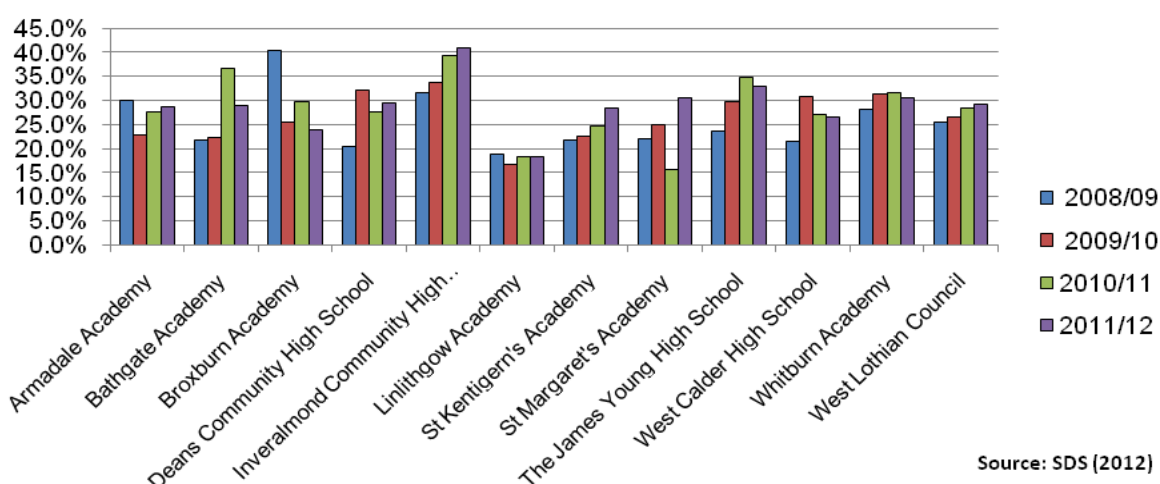
Destination analysis by school - Further Education

- In five of West Lothian's eleven secondary schools, the proportion of leavers entering further education increased from 2010/11 to 2011/12 (Table 3 and Figure 4 below).
- Inveralmond Community HS retained its position as the school with the highest level of leavers going into further education, with 41% of leavers going to College in 2011/12.
- St Margaret's Academy also saw a large increase (14.9%) in the proportion of leavers entering further education in 2011/12, following a considerable fall (9.2%) in its figure for 2010/11. For the first time over the past four years, St Margaret's Academy was slightly above the average figure for West Lothian school leavers entering further education.

Bathgate Academy and Broxburn Academy experienced the largest of falls in the percentage of their leavers going into further education between 2010/11 and 2011/12. In Bathgate Academy, this was probably due to a corresponding increase in the percentage entering employment and in Broxburn Academy because of a significant increase in the percentage entering higher education

Table 3: Further education by school				
	2008/09	2009/10	2010/11	2011/12
Armadale Academy	30.1%	22.9%	27.5%	28.7%
Bathgate Academy	21.7%	22.2%	36.6%	28.9%
Broxburn Academy	40.4%	25.5%	29.7%	23.8%
Deans CHS	20.5%	32.3%	27.7%	29.4%
Inveralmond CHS	31.7%	33.6%	39.4%	41.0%
Linlithgow Academy	18.9%	16.8%	18.3%	18.2%
St Kentigern's Academy	21.7%	22.4%	24.7%	28.4%
St Margaret's Academy	22.0%	24.8%	15.6%	30.5%
The James Young HS	23.8%	29.8%	34.7%	33.0%
West Calder HS	21.5%	30.9%	27.2%	26.6%
Whitburn Academy	28.2%	31.3%	31.5%	30.6%
West Lothian Council	25.4%	26.5%	28.4%	29.1%

Figure 4: Further education by school



Source: SDS (2012)

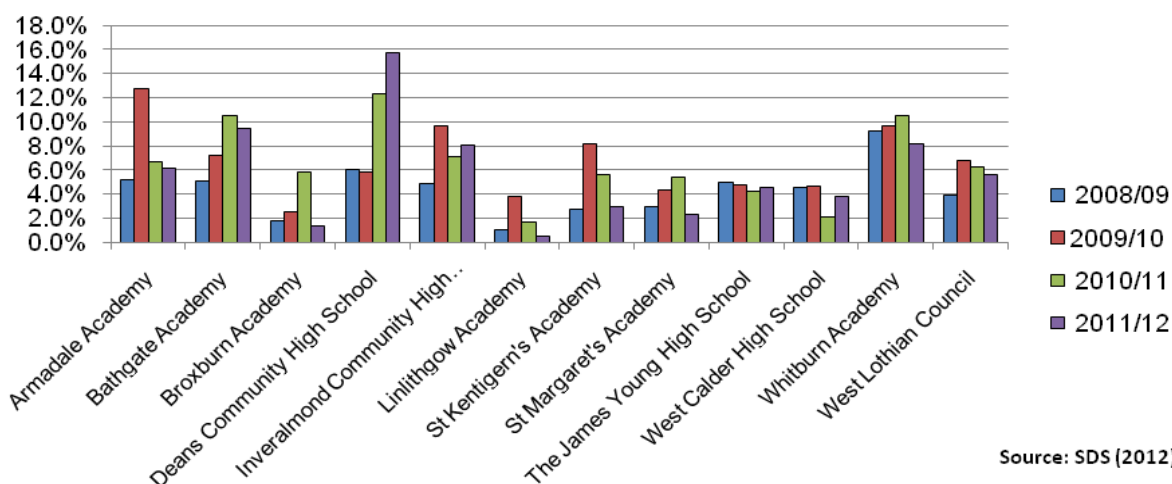
Destination analysis by school -Training

Training as a destination presents a more complex picture in West Lothian, as this has changed significantly over the last four years, during which the Council and its partners created additional training places. Of note is:

- Deans CHS achieved 15.7% of leavers (24 young people) entering training programmes.
- Deans CHS, Inveralmond CHS, James Young HS and West Calder HS all increased the proportion of leavers entering training between 2010/11 and 2011/12. Deans CHS and West Calder HS had the most significant increases.
- It may be that schools which experienced a fall in the proportion entering training in 2011/12, were unable to sustain large increases they experienced over the previous year, for example, Broxburn Academy and St Margaret's Academy.

	2008/09	2009/10	2010/11	2011/12
Armadale Academy	5.1%	12.7%	6.7%	6.1%
Bathgate Academy	5.1%	7.2%	10.5%	9.4%
Broxburn Academy	1.8%	2.5%	5.8%	1.4%
Deans CHS	6.0%	5.8%	12.3%	15.7%
Inveralmond CHS	4.8%	9.7%	7.1%	8.1%
Linlithgow Academy	1.0%	3.8%	1.7%	0.5%
St Kentigern's Academy	2.7%	8.2%	5.6%	3.0%
St Margaret's Academy	2.9%	4.3%	5.4%	2.3%
The James Young HS	5.0%	4.8%	4.2%	4.5%
West Calder HS	4.5%	4.7%	2.1%	3.8%
Whitburn Academy	9.2%	9.6%	10.5%	8.2%
West Lothian Council	3.9%	6.8%	6.3%	5.6%

Figure 5: Training by school



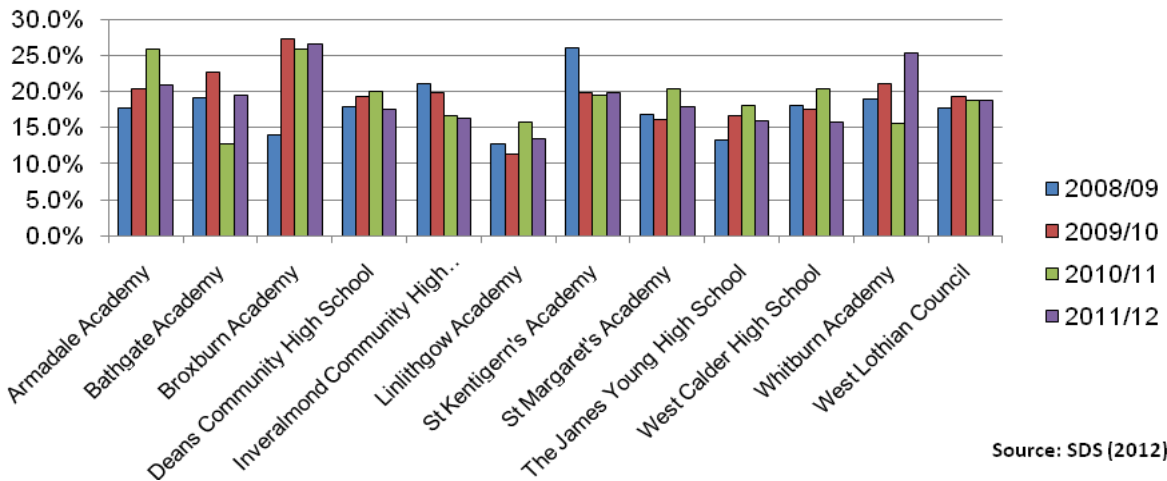
Source: SDS (2012)

Destination analysis by school - Employment

- In 2011/12, over a quarter of school leavers from Broxburn Academy and Whitburn Academy progressed directly into employment.
- In addition, at Armadale Academy, Bathgate Academy and St Kentigern's Academy around one-fifth of school leavers went directly into employment, which is above the average for all West Lothian schools and for Scotland as a whole.
- Between 2010/11 and 2011/12, Whitburn Academy and Bathgate Academy achieved the most significant increases in the proportion of leavers entering employment, respectively 9.8% and 6.6%.

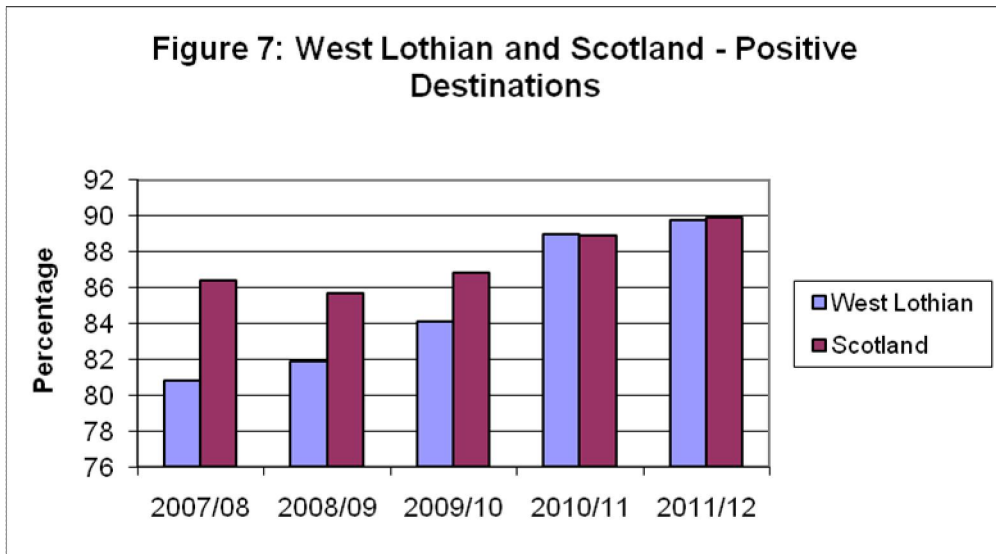
	2008/09	2009/10	2010/11	2011/12
Armadale Academy	17.6%	20.4%	25.8%	20.9%
Bathgate Academy	19.1%	22.6%	12.8%	19.4%
Broxburn Academy	14.0%	27.3%	25.8%	26.5%
Deans Community HS	17.9%	19.4%	20.0%	17.6%
Inveralmond Community HS	21.2%	19.8%	16.7%	16.2%
Linlithgow Academy	12.8%	11.4%	15.7%	13.4%
St Kentigern's Academy	26.1%	19.9%	19.5%	19.8%
St Margaret's Academy	16.8%	16.1%	20.4%	17.8%
The James Young HS	13.3%	16.7%	18.1%	16.0%
West Calder HS	18.1%	17.4%	20.4%	15.8%
Whitburn Academy	19.0%	21.2%	15.5%	25.3%
West Lothian Council	17.8%	19.4%	18.7%	18.8%

Figure 6: Employment by school



Source: SDS (2012)

West Lothian's position relative to the Scottish average



Scottish Government (2013)

Increases in the percentage of school leavers entering a positive destination in West Lothian have continued year on year, in spite of the recession which seems mainly to have impacted the national figure in 2008/09. Over the past five years, West Lothian has been reducing steadily the gap with the Scottish average and in 2010/11 exceeded the Scottish average by 0.1%, although it was 0.1% below the average for 2011/12.

Comparisons with other local authorities

The SLDR results for West Lothian for 2010/11 were a big improvement on the preceding years. The 2011/12 results show a very slight improvement on the 2010/11 figures of 0.8%.

The fact that progress has been maintained from a previously high level is therefore generally good news.

Between 2005/6 and 2008/9 West Lothian was at, or near, the bottom of the “league table” of all Scottish local authorities. In 2010/11, West Lothian’s position relative to other local authorities improved to joint 16th place. The latest data shows that, despite a small increase in positive destinations, our ranking has fallen slightly to 18th place (jointly with South Lanarkshire).

In 2011/12, the percentage of West Lothian school leavers achieving positive destinations was marginally (0.1%) below the Scottish average. In fact, if two additional students had entered positive destinations that would have lifted West Lothian above the Scottish average.

When looking at West Lothian’s school leaver destinations, it is useful to compare the area to a set of local authorities with similar economies to West Lothian. The table below shows the positive destinations for comparator authorities for 2009/10 to 2011/12, alongside their respective ranks. From table 6 below, West Lothian was placed 2nd equal in its group of comparator authorities in 2011/12.

Table 6: Comparison with similar local authorities						
Local Authority	Positive Destinations 09/10	Rank 09/10	Positive Destinations 10/11	Rank 10/11	Positive destinations 11/12	Rank 11/12
Falkirk	84.2	27	87.9	24	90.3	14
West Lothian	84.1	29	89.0	16	89.8	18
South Lanarkshire	86.2	21	87.4	25	89.8	18
Fife	86.6	20	91.8	6	89.6	21
City of Edinburgh	82.5	32	86.4	26	88.3	24
Clack’shire	87.9	15	84.8	32	87.8	26
North Lanarkshire	85.7	23	85.9	29	87.4	30
Midlothian	83.1	31	85.2	31	85.4	32
Scotland	86.8	NA	88.9	NA	89.9	NA

Scottish Government (2013)

Comparing West Lothian’s rank out of 32 (where 32 is the lowest and 1 the highest) against similar local authorities shows that overall the improvement in West Lothian’s position has been maintained. Falkirk has improved significantly over the past 3 years and Edinburgh has also made progress.

Fife’s ranking had improved from 20th (out of 32 local authorities) to 6th place in 2010/11 but their results and relative position deteriorated in 2011/12. North Lanarkshire and Midlothian have made modest progress in their results but not in their rankings relative to comparators.

Conclusions

Positive destinations for school leavers have increased year on year for the past five years, although until 2010/11 West Lothian’s position relative to other local authorities had been disappointing. Over the past two years however, the continuing, targeted work on this issue has meant that West Lothian’s position relative to other authorities has improved

significantly, as has the proportion of young people leaving school and entering a positive destination. The challenge now is to continue to progress from the latest results. This will involve addressing the differences in performance between schools – and the apparent difference in performance between schools in the south and west of the district and those in the north and east.